



## **ADDENDUM 1**

### **Tender IDS (R&T) 17/2025**

**TENDERS ARE HEREBY INVITED FROM CONTRACTORS WITH A CIDB GRADING OF 2CE OR HIGHER FOR THE REPAIR OF STORMWATER CATCHPITS AND MANHOLES ON AN AS AND WHEN REQUIRED BASIS FOR A PERIOD OF THREE (3) YEARS. MORE THAN ONE BIDDER MAY BE APPOINTED.**

### **SECTION C4.1 – TYPICAL DRAWINGS**

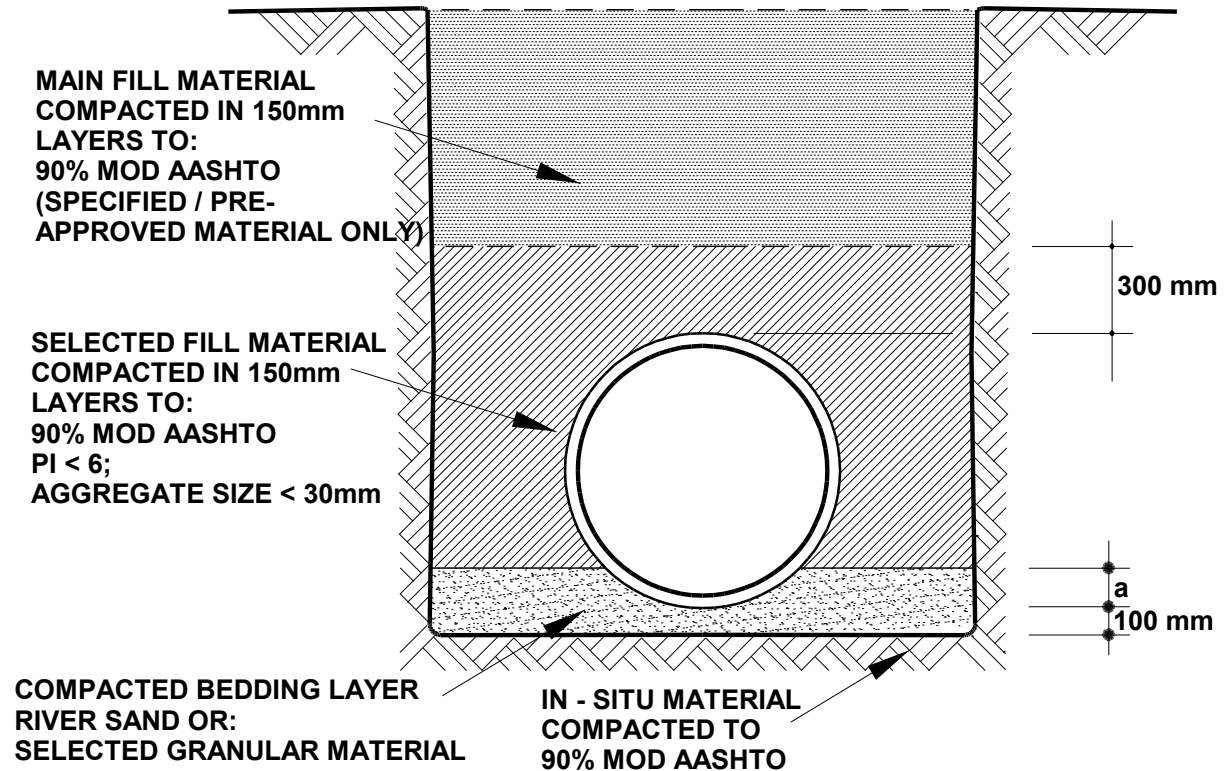
The following drawings have been added to the tender document and shall form part of the tender documentation

#### **Typical Drawings**

**The following drawings shall apply to this contract:**

## Drawings

### TYPICAL PIPE BEDDING DETAILS

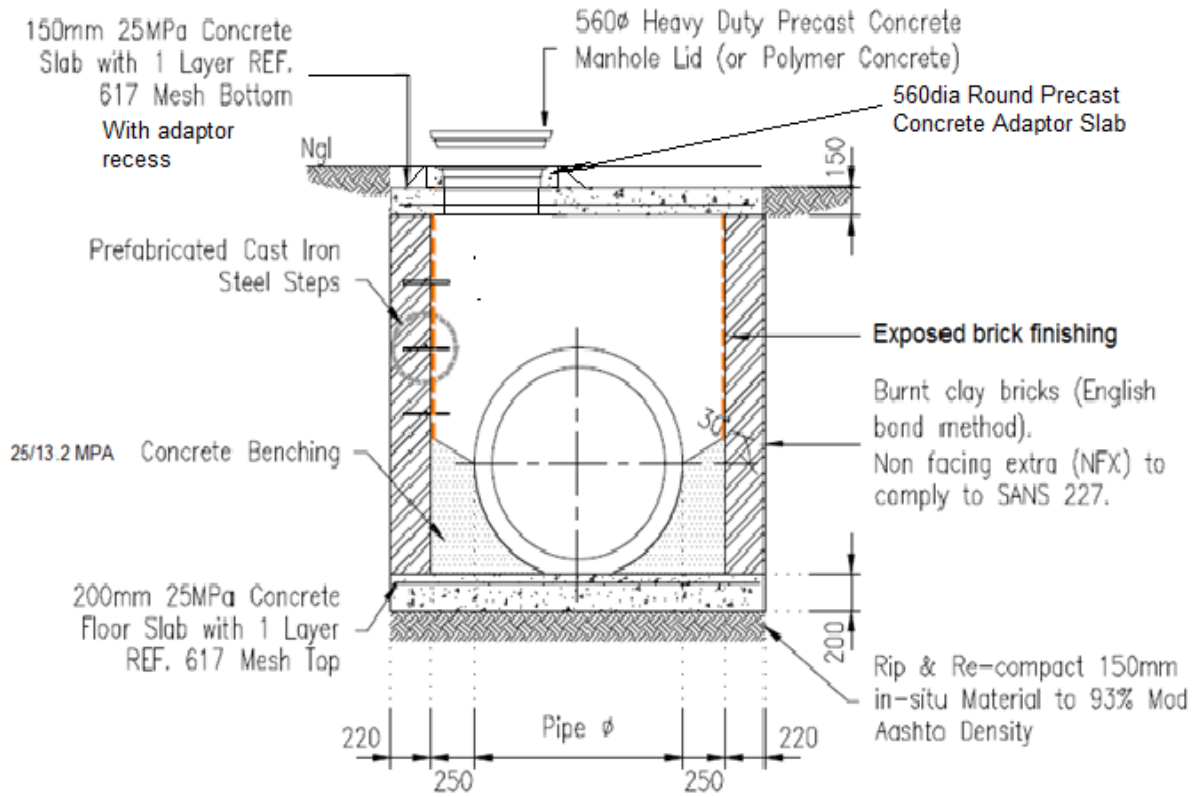


#### NOTES:

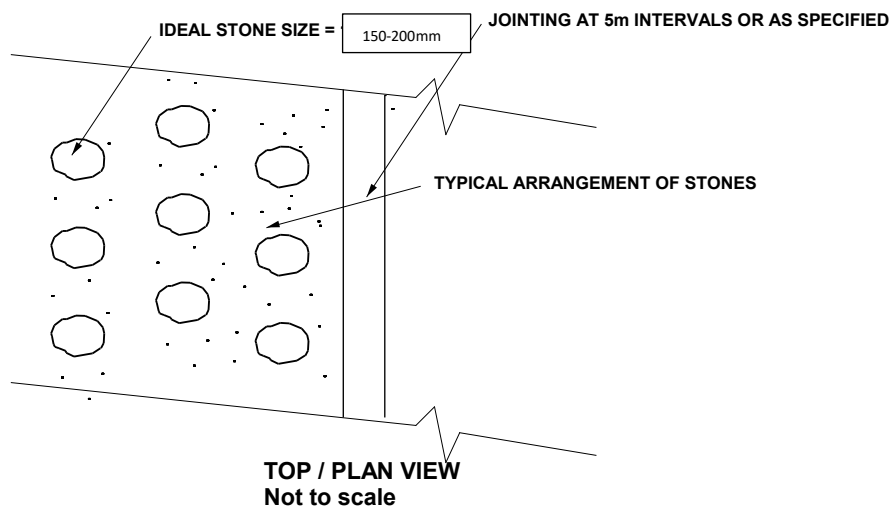
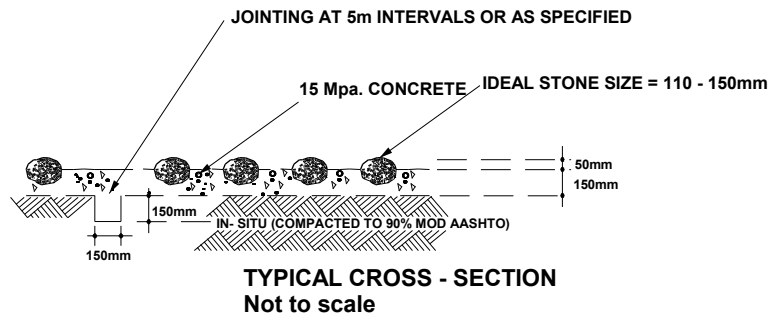
FILL MATERIAL TO BE PRE- APPROVED BY THE ENGINEER

| Pipe dia. | Dimension (a) |
|-----------|---------------|
| 450 mm    | 75 mm         |
| 600 mm    | 100 mm        |
| 750 mm    | 125 mm        |
| 900 mm    | 150 mm        |

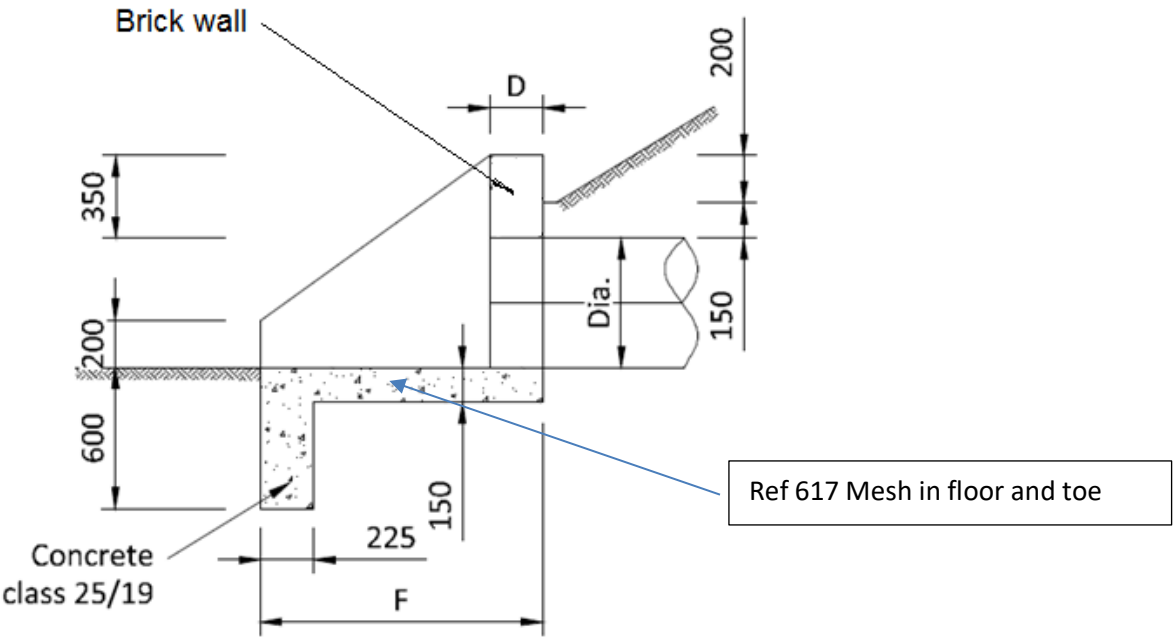
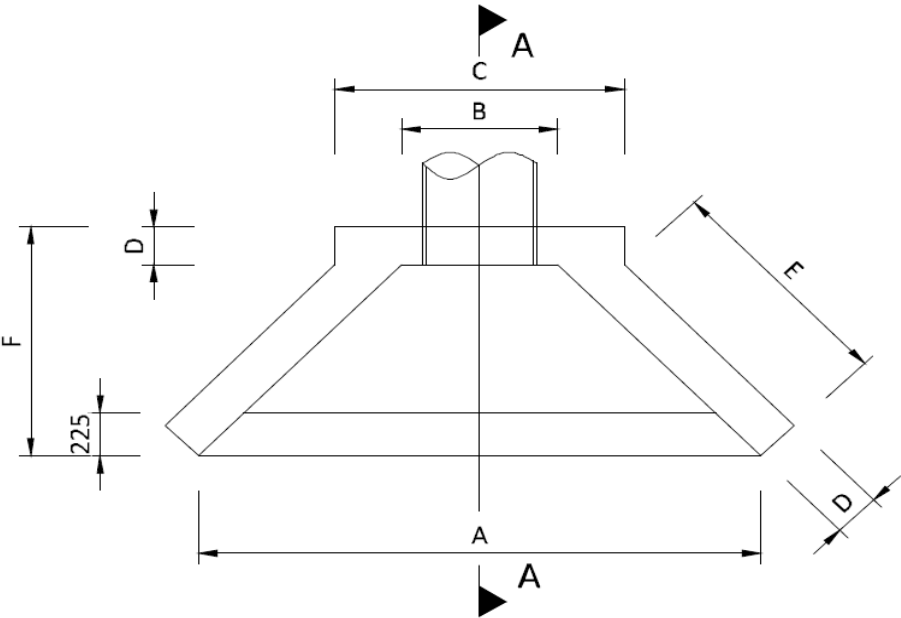
## Installation of Brick Manholes



## Stone Pitching



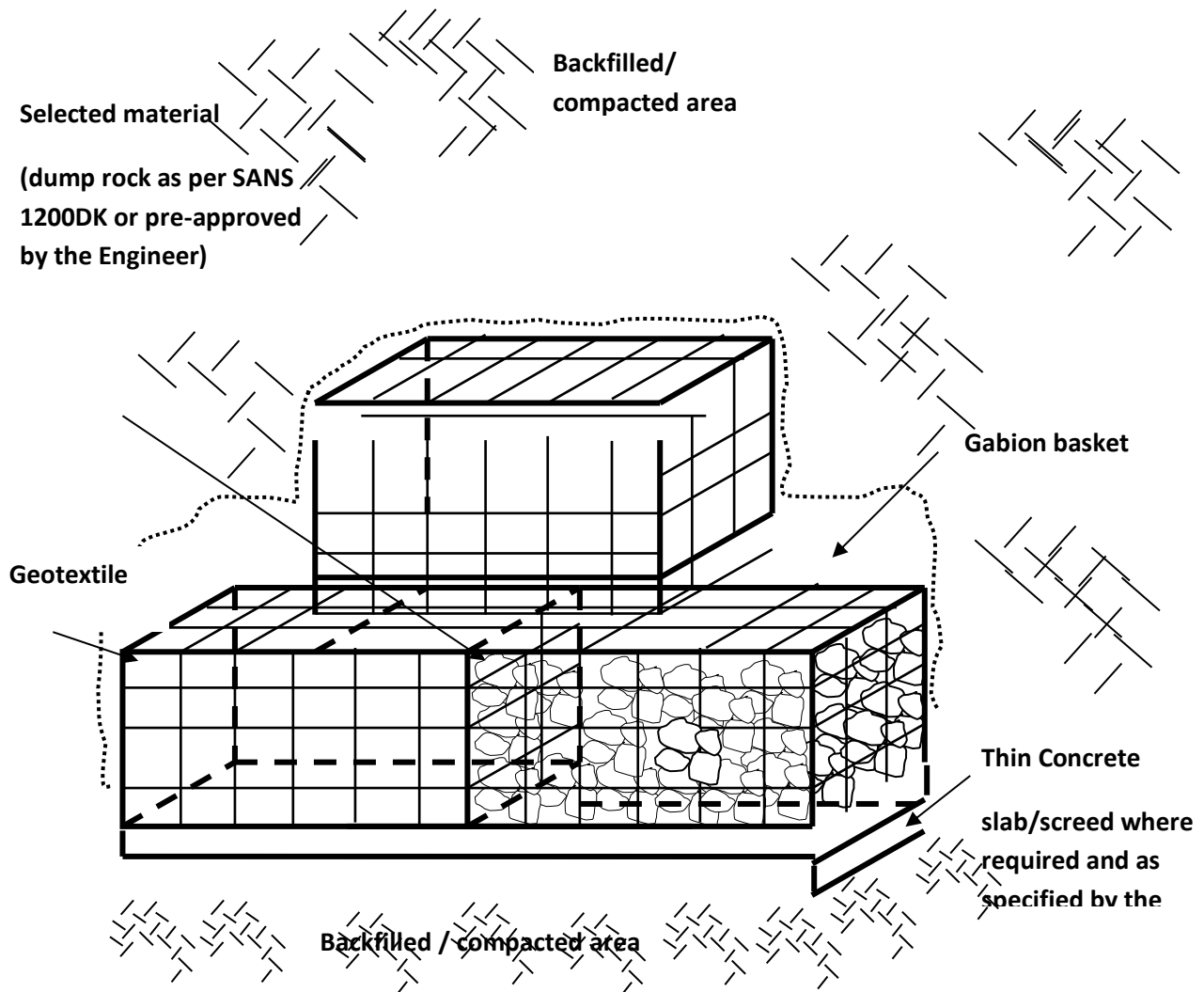
# **Stormwater pipe outlet/inlet structures**



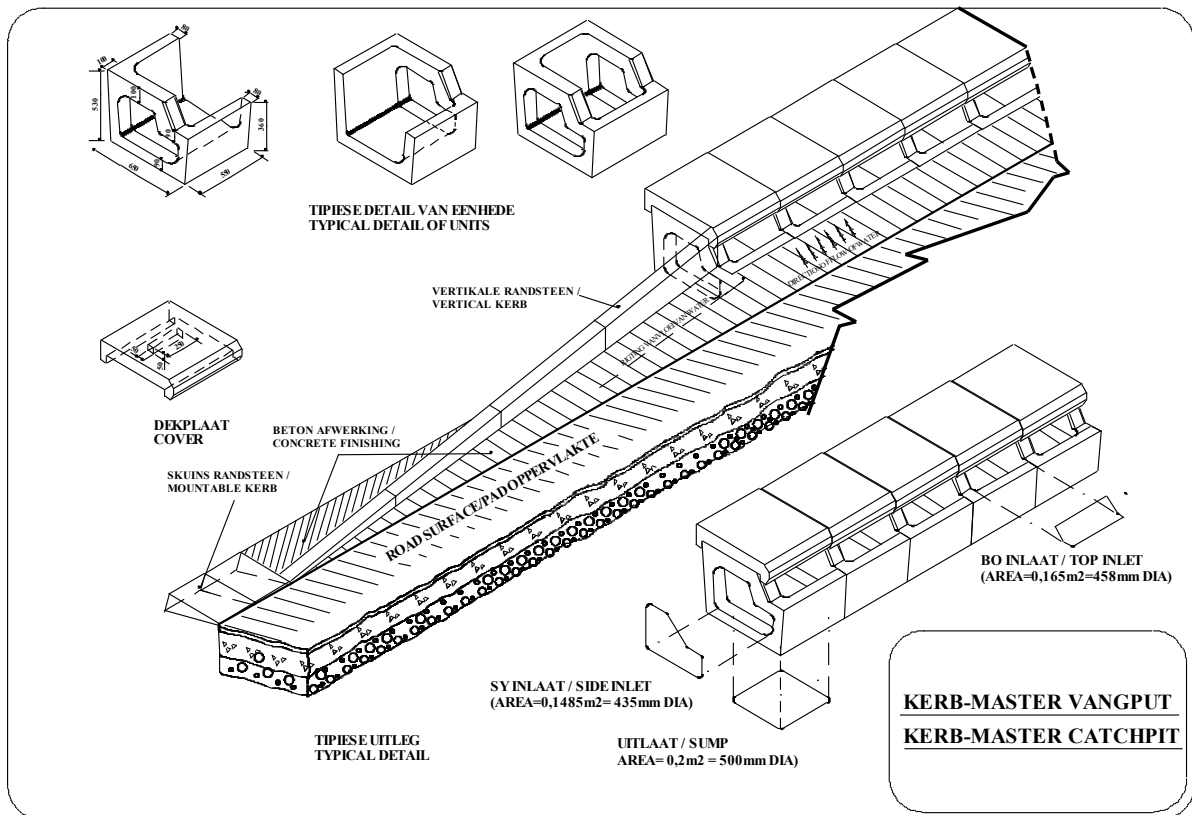
| HEADWALL DIMENSIONS |   |   |   |   |   |         |          |
|---------------------|---|---|---|---|---|---------|----------|
| Dia.                | A | B | C | D | E | INLET F | OUTLET F |

|              |      |      |      |     |      |      |      |
|--------------|------|------|------|-----|------|------|------|
| <b>450mm</b> | 2200 | 600  | 1160 | 220 | 930  | 1000 | 1350 |
| <b>600mm</b> | 2700 | 750  | 1390 | 220 | 1150 | 1200 | 1800 |
| <b>750mm</b> | 3400 | 900  | 1610 | 330 | 1520 | 1500 | 2250 |
| <b>900mm</b> | 4100 | 1050 | 1825 | 330 | 2245 | 2100 | 2700 |

## GABION BASKETS CONSTRUCTION



## Storm water catch pits (Kerb-master Type)





### Cover slabs for Storm water catch pits : Various Types

1. Supply and place 600/900/1200mm wide x 75mm cover slabs to any site within Mogale city

