

ADDENDUM NO.1

CONTRACTTITLE: FOR THE SUPPLY, DELIVERY AND OFF-LOADING OF ELECTRICAL ENCLOSURES FOR MOGALE CITY MUNICIPAL STORES ON AN AS AND WHEN REQUIRED BASIS FOR A PERIOD OF THREE (3) YEARS.

TENDERNUMBER: IDS (E) 02/2025

RE: ENQUIRY, INFORMATION REGARDING THE SUPPLY AND DELIVERY OF ELECTRICAL ENCLOSURES, TENDER NUMBER - IDS (E) 02/2025

With reference to the enquiry that was received regarding the supply and delivery of electrical enclosures, the information is as follows:

- Attached please find the sample drawings of the 3 - way and 9 - way meterboxes.
- The 6 - way meter box is a new addition to the MCLM stock and no sample drawings are available at this stage. This meter box must basically be manufactured in the same manner as the 3 - way or 9 - way meter box, in order to accommodate 6 meters
- Tenderers must be informed that these are only sample drawings and that the tender must be based on the tenderers' specific product and not replicate these products. It also does not have to be a bowler top – type meter box.

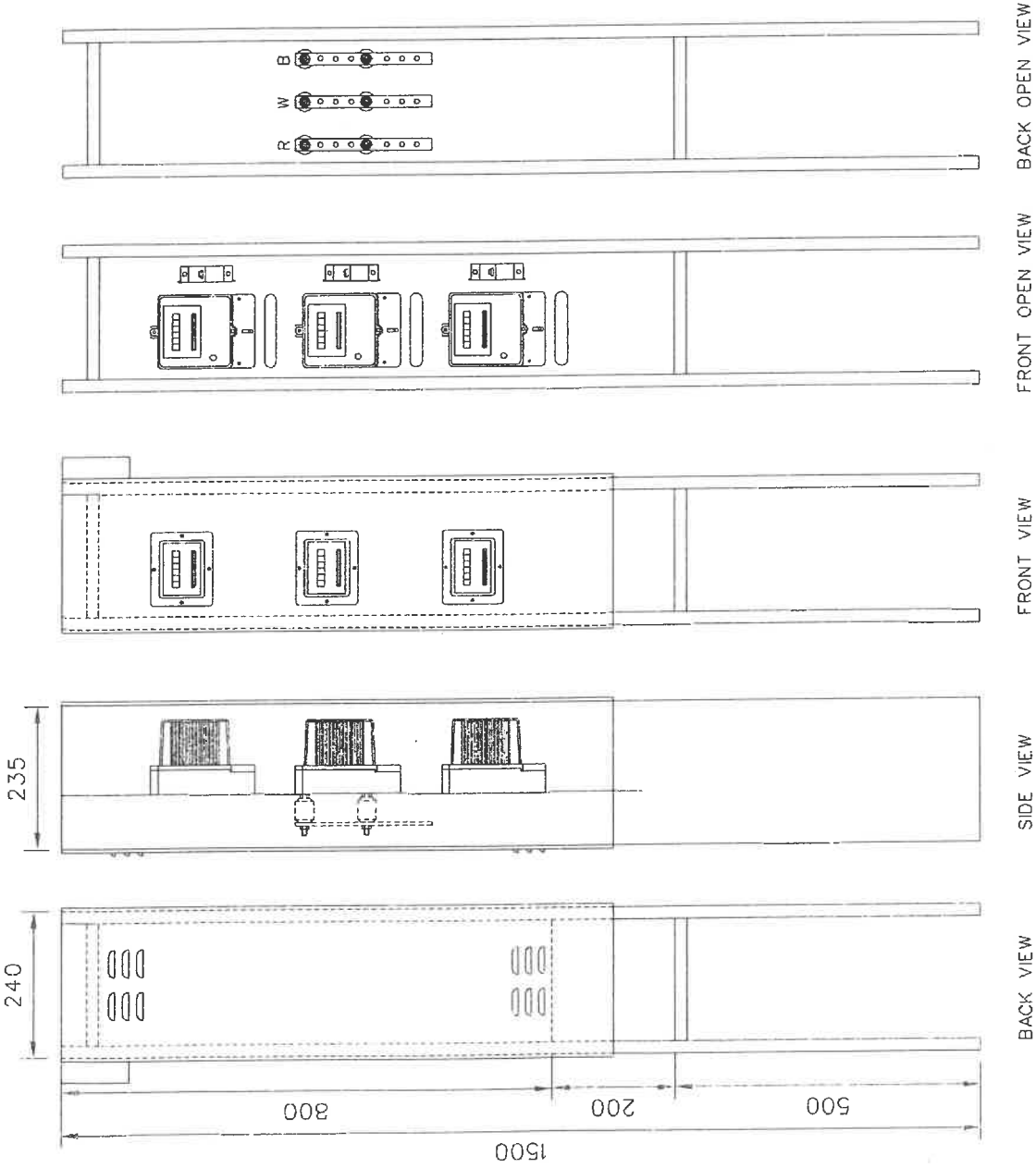
MECHANICAL

MATERIAL & THICKNESS: 1.5mm, 3CR12
LOCK MECHANISM: RISI LOCK
TERMINATION: UNISTRUT FRONT & BACK
FINISH: PICKLED & PASSIVATED
CHASSIS PLATE
SLIDING DOORS: FRONT & BACK

ELECTRICAL

BUSBARS: N & E
3 x 1P CIRCUIT BREAKERS (26mm)
3 x 1P KWH METERS

**MOGALE CITY
3 WAY 1 PHASE METERING
CABINET BOWLER TYPE**



BACK OPEN VIEW

FRONT OPEN VIEW

FRONT VIEW

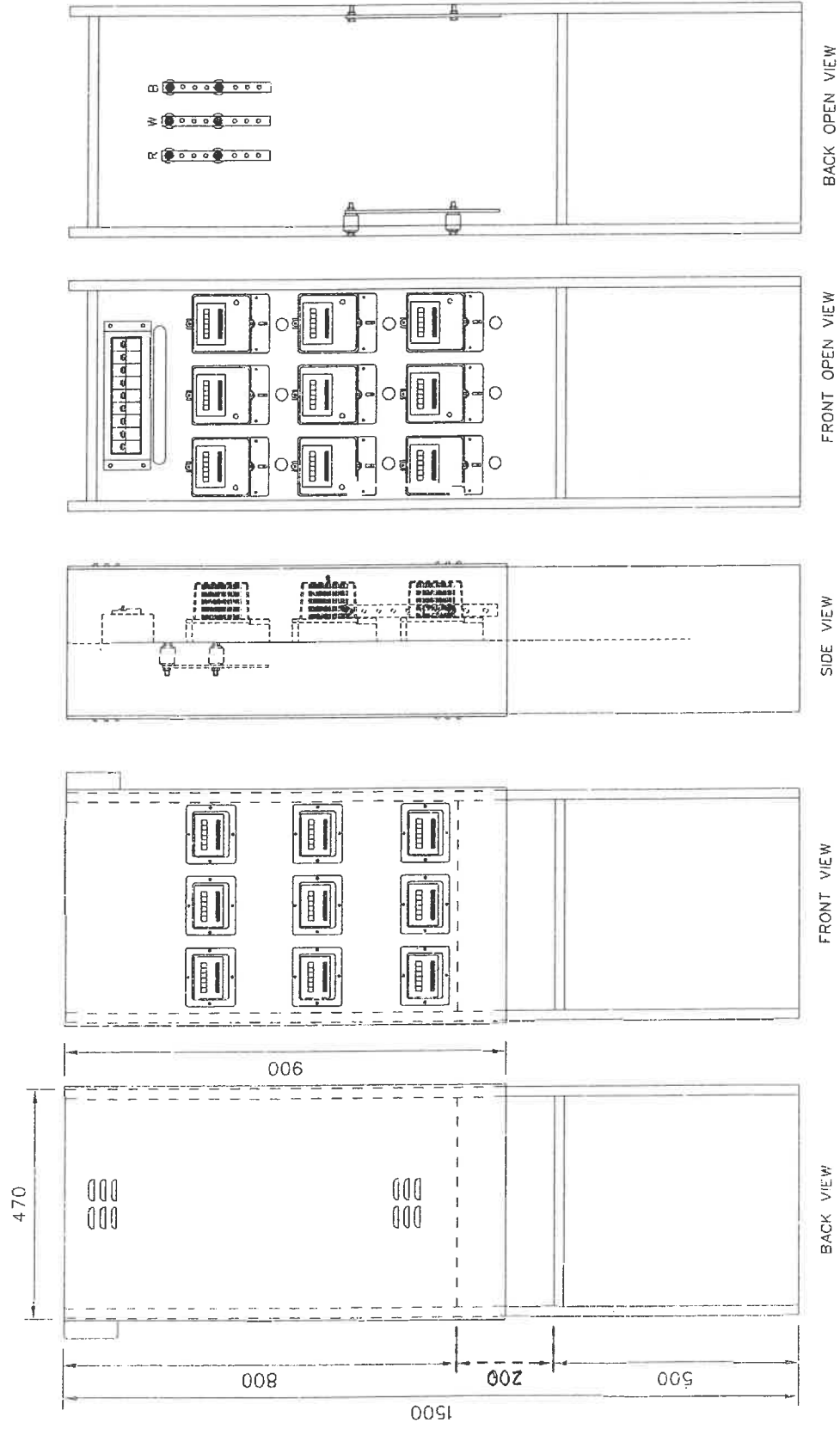
SIDE VIEW

BACK VIEW

MECHANICAL
 MATERIAL & THICKNESS: 1.5mm 3CR12
 LOCK MECHANISM: RISI LOCK
 TERMINATION: UNSTRUT FRONT & BACK
 FINISH: POLISHED & PASSIVATED
 CHASSIS PLATE
 SLIDING DOORS: FRONT & BACK

ELECTRICAL
 BUSBARS: N & E
 9 x 1P CIRCUIT BREAKERS (26mm)
 2 x 1P KWH METERS

MOGALE CITY
 9 WAY 1 PHASE METERING
 CABINET BOWLER TYPE



BACK OPEN VIEW

FRONT OPEN VIEW

SIDE VIEW

FRONT VIEW

BACK VIEW