



Ref: Maropeng Mokhatla (SCM)
Tel: (011) 951-2541/2014/16

REQUEST FOR FORMAL WRITTEN PRICE QUOTATIONS

**Procurement from R30 000.00 up to a transaction value of R 200 000.00 (including Vat)
(For publication on Mogale City Website and Notice Boards)**

Kindly furnish Mogale City Local Municipality with a written quotation on the services listed hereunder:

RFQ: I (R) 11/2013

QUOTATIONS ARE HEREBY INVITED FROM SERVICE PROVIDERS FOR THE LAYING OF PRE-CAST CONCRETE KERBS ON AN AS AND WHEN REQUIRED BASIS FOR PERIOD OF TWELVE (12) MONTHS.

Advertising date: Tuesday 11 September 2012

Closing date and time: Wednesday 19 September 2012 @ 11:00

Compulsory briefing session will be held on Friday 14 September 2012 @10:00 at the Flip Uys Boardroom, Civic Centre, Krugersdorp.

The quotation must be submitted on the official quotation document (including all the required annexures) and must be delivered by hand before the official closing date and time to:

The SCM Unit of MCLM
Civic Centre
Corner Market & Commissioner Streets, Krugersdorp
Upper Level West Wing
Tender Box 1

The following conditions will apply:

- Quotation documents can be downloaded from the website www.mogalecity.gov.za or collected from the Supply Chain Management Unit, Finance Dept, Civic Centre, Krugersdorp.
 - The lowest or any quotations will not necessarily be accepted and MCLM reserves the right to accept the quotation in total or only in part.
 - To participate in MCLM's quotation procurement of goods and services, suppliers are requested to register on the MCLM supplier database. Forms available from SCM Unit or website.
 - No late quotations delivered after the official closing date and time will be accepted.
 - **Price(s) quoted must be valid for at least sixty (60) days from date of your offer.**
 - **Price(s) quoted must be firm and must be inclusive of VAT.**
 - A firm delivery period must be indicated.
 - A valid, original tax clearance certificate must be attached.
 - **All quotations received will be evaluated on the 80/20 point scoring basis. The 80 points will be for Price and 20 points are for Broad Based Black Economic Empowerment (BBBEE) for attaining the BBBEE status level of contribution in accordance with the table below:**
 - **MBD 4. Declaration of Interest**
 - **MBD 6.1 B-BBEE Status Level of Contribution.**
 - **MBD 8:Declaration of bidders past supply chain management practices**
 - **MBD 9:Certificate of independent bid determination.**
- If the MBD forms are not completed & submitted, your quotation will be rejected.
- No quotation will be considered from persons in service of the state (MDB 4)

**MOGALE CITY LOCAL MUNICIPALITY
REQUEST FOR FORMAL WRITTEN PRICE QUOTATION**

- **As from the 7 December 2011, all Service providers / contractors must submit valid, certified copies of their BEE certificates from an accredited BEE verification agency with their tender submission.** Failure to submit a BEE certificate will lead to forfeiture (loss) of the preference points.
- In the instance of Exempted Micro Enterprises (EME) (turnover less than R 5m) a letter from a professional, registered accountant/ auditor in order to qualify for preference points.
- **Electronic (e-mailed or faxed) quotations are not accepted.**

Failure to submit a BEE certificate will lead to forfeiture (loss) of the preference points
In the instance of Exempted Micro Enterprises (EME) (turnover less than R 5m) a letter from a professional, registered accountant/ auditor in order to qualify for preference points.

Mogale City Local Municipality requests a quotation on the services listed hereunder on the Request for Quotation Forms. Please furnish all the information as requested and return the quotation on the date stipulated. Late and incomplete submissions will invalidate the quotation submitted.

RFQ NUMBER:	I (R) 11/2013: Appointment of service provider for the laying of pre-cast concrete kerbs on an as and when required basis for period of twelve (12) months.
ADVERTISING DATE:	Tuesday 11 September 2012
DEPARTMENT	Infrastructure Services: Roads & Surface Drainage
DESCRIPTION OF SERVICES	<u>PROJECT SPECIFICATION</u>
	<p>1. Scope:</p> <p>This specification covers the laying of pre- cast concrete kerbs. The rates quoted must make provision for:</p> <p>(a) Supply of all the required materials and laying of pre- cast concrete kerbs.</p> <p>(b) Laying of pre- cast concrete kerbs only, with all the material supplied by Mogale City Local Municipality.</p> <p>The work to be carried out includes:</p> <ul style="list-style-type: none"> • Laying of approximately 1200 metres pre-cast concrete kerbs. (The actual amount of work to be performed will be dependent on the available budget, identified needs and priorities of Mogale City Local Municipality). • Provision of all the required necessary materials required to lay the Pre- cast kerbs.

or:

Utilization of the material provided to Lay precast kerbs.

- Preparation work, Excavation works and/or or removal of exiting kerbs
- Backfilling behind kerbs up to 0.5m wide
- Site- clearance: Transporting and offloading spoil material on site or at dumping site and cater for any dumping cost.
- Ensure that adequate safety and traffic accommodation measures are implemented. (See Annexure "A" for more details).
- Capture photos before and after the works, print photos / submit electronically for record purposes.
- Laying of concrete kerbing (including concrete haunching behind kerbs) to the required line and level.

2. Interpretation:

2.1 Supporting Specifications: The following specifications shall, apply:

- a.) This project specifications and Annexures.
- b) SARTSM Manual Vol 2.
- c) Drawing no's: JRA-SD -R011 & JRA-SD -R012A & JRA-SD -R014
(Annexure: "B")
- d) SABS specification for laying of kerbs.

3. Schedules:

- **All inclusive rate for Supply of all the required materials and laying of pre-cast concrete kerbs.**
- **Rate for Laying of pre- cast concrete kerbs only.**

LAYING OF PRECAST CONCRETE KERBS	<u>All inclusive Rate</u>	<u>Rate (Laying of kerbs only, material to be supplied by Mogale City Local Municipality)</u>
	<u>VAT INCLUSIVE RATE PER METER</u>	<u>VAT INCLUSIVE RATE PER METER</u>
<u>Fig.12 kerb or similar</u>		
<u>Fig. 10 kerb</u>		
<u>Fig. 7 kerb</u>		
<u>Fig. 8b kerb</u>		
<u>Fig. 8c kerb</u>		
<u>Fig. 3 kerb</u>		

Note:

The tendered rate to include full compensation for the Contractor's charges for the repair/ laying of precast concrete kerbs, including excavations and backfilling behind kerbs up to 0.5m and replacement of broken units, as well as transportation and offloading of material at dumping site plus any dumping cost. Ensure that all staff members are abiding by the safety requirements and the traffic accommodation measures are implemented.

ANNEXURE A

A 1






Traffic accommodation for road reserve and on shoulders.

13.8.8

SHORT TERM WORKS

13.8.6 Fixed Site - Work on Shoulder

- 1 The temporary signing treatment illustrated in Figure 13.35 is intended for short term work located on the shoulder of a public road, either in the sense that the work is actually on the shoulder, or is immediately adjacent but outside the shoulder, but requires occupation of the shoulder by the work unit. In situations such as this, if the work unit's support vehicle is equipped with flashing yellow warning lights, it may benefit the safety of the workers for the vehicle to be parked on the shoulder, at the end of the Buffer Zone, between the workers and approaching traffic.
- 2 If the work is carried over into darkness, the TRAFFIC CONE delineation devices TD4 shall be provided with retroreflective sleeves or they shall be replaced by DELINEATOR PLATE hazard marker signs TW401/TW402. Cones used on high speed roads shall have a height of at least 700 mm. For details of delineator and cone spacings refers to table 13.4.
- 3 Tapers used for this type of work site treatment should be in accordance with Table 13.5.
- 4 Advance warning signs should be located up to 600 m in advance of the start of the taper for sites with operating speeds in excess of 80 km/h. In addition, because the signing levels are minimised, extreme care must be taken to note any features of each specific work site which may reduce the effectiveness of the signs. In particular, vertical curvature and overhanging vegetation should be assessed. If there are adverse conditions and operating speeds are in excess of 80 km/h, or even 60 km/h signs, should be displayed in accordance with Figure 13.26. The requirements of Table 13.1 should be adhered to with regard to the minimum mounting height of temporary signs.

MAINTENANCE UNIT INVENTORY			
Sign	No	Size (mm)	Quantity ^a
	TW336	1200	2
	TW330	1200	1
	TR104	1200	1
	TD4	450 750	15 Min. plus 10 per 100m site length
	TR201-80 TR201-60	1200	2 2

Checklist

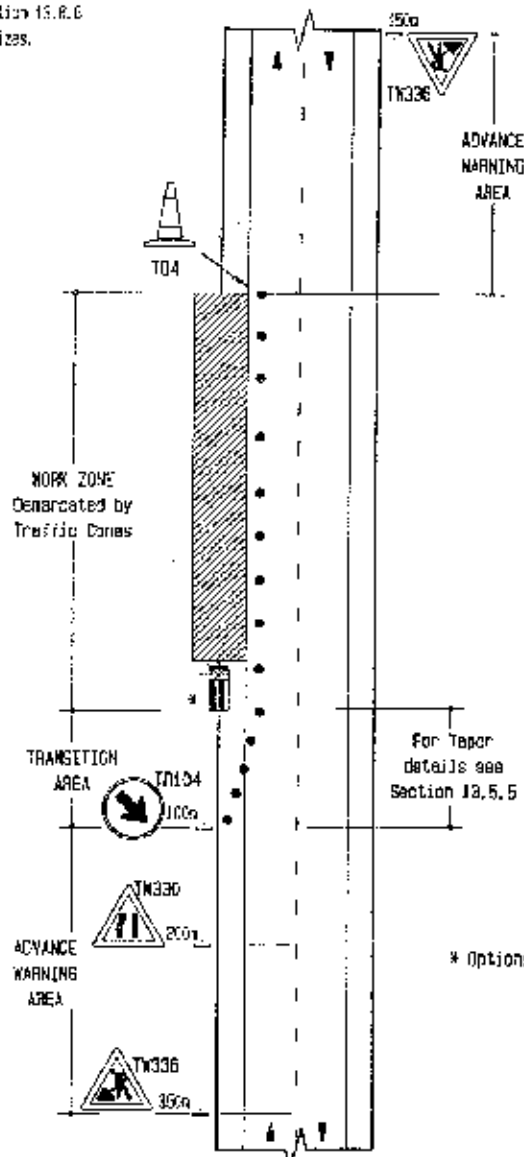
- are operating speeds in excess of 80 km/h?
- does the unit have enough cones/delineators for correct spacings?
- does the unit have delineators or retroreflective sleeves for cones for night time use?
- is the site set up with adequately safe Buffer Zones (see Figure 13.20)?
- is there adverse vertical or horizontal curvature on the approach to the site?
- can signs be mounted higher to improve early warning of the site if required?

ANNEXURE A

Traffic accommodation for road reserve and on shoulders.

A 2

Ref. See Subsection 13.8.6
for Sign Sizes.



- NOTES:
1. Cones should be replaced by delineators if the work area represents a night time hazard.
 2. Cones used on high speed roads should have a minimum height of 100 mm.
 3. Spacing of signs may be increased to start from 100 m if speeds are 60 km/h or higher or sight distance is limited.
 4. The imposition of a temporary speed limit should be considered if operating speeds are in excess of 60 km/h.
 5. Taper lengths should be in accordance with Table 13.5.

* Optional treatment

Fig. 13.35 Fixed Site - Work on Shoulder

ANNEXURE A

Traffic accommodation for road reserve and on shoulders.


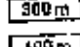
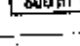

13.8.2

13.8.3 Maintenance in Road Reserve

1. This application represents the lowest signing level covered in this Chapter. This signing level is appropriate ONLY when the work concerned does not encroach nearer to the edge of the roadway than the shoulder break point. Typical activities which might warrant this low level of signing are:
- verge grass-cutting;
 - cleaning of side drains or cross drain inlets and outlets;
 - fence repairs;
 - retro-reflective post repair/maintenance/replacement.
2. As soon as workers are required to move closer to the travelled way, additional signing consistent with Figures 13.35, 13.36 or 13.41 to 13.43 should be used.
3. If the maintenance work gradually progresses along the road reserve, the TW386 signs should be moved forward with the work so that they are never more than 600 m from the work.
4. All workers should still be provided with the recommended bright clothing, even when working off the road edge (see Figure 13.30).
5. The sign inventory indicated is a minimum for the type of work concerned. Any work unit undertaking this type of work is likely to be a general maintenance unit and will probably have a minimum sign inventory consistent with most tasks in this section.

Checklist

- Is the site set up with adequately safe Buffer Zones (see Figure 13.20)?
- Are workers likely to get within 3 m of passing vehicles?
- Is the maintenance unit vehicle and equipment well off the road?
- Can signs be clearly seen by approaching drivers - if not, move them further out?
- Is a 'higher level' of signing appropriate to ensure worker and public safety?

Sign	No.	Size (m ²)	Quantity
	TW386	1200	2
 	TIN 11.3	1200	4
	FLAS5	450 X 400	2

ANNEXURE A
Traffic accommodation for road reserve and on shoulders.

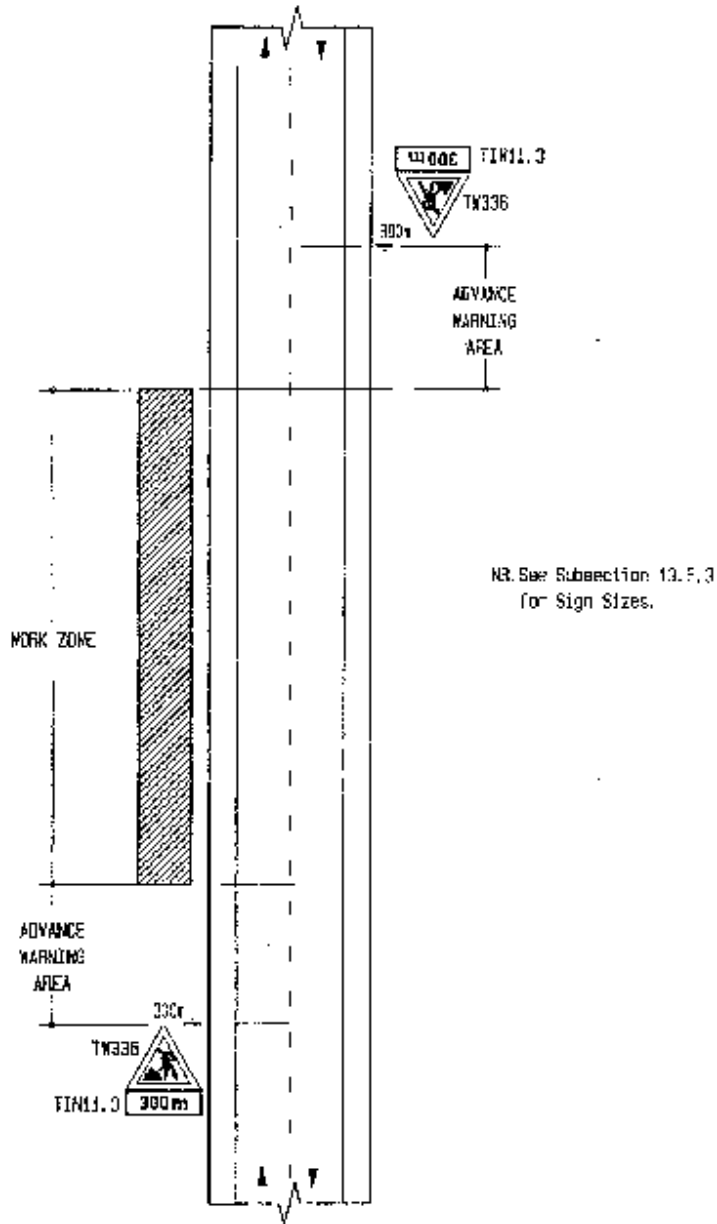


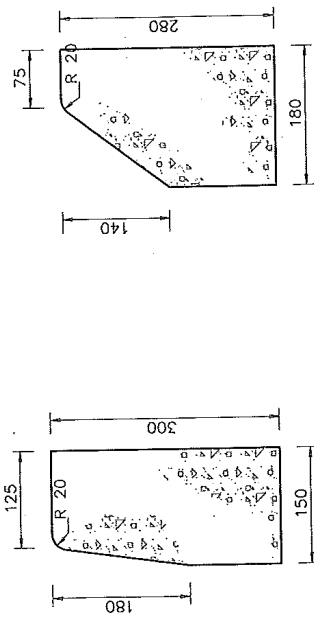
Fig. 13.32 Maintenance in Road Reserve (off the road)

ANNEXURE B
Particular Project Specifications for Laying of Kerbs

M

NOTES:

1. MOUNTABLE KERBS TO BE FIG.8c UNLESS OTHERWISE SPECIFIED
2. ALL KERB SHAPES AND STRENGTH TO COMPLY WITH SABS 927.
3. CONCRETE HAUNCHING TO BE PLACED AT BACK OF KERBS AT ALL JOINTS ON STRAIGHTS BUT CONTINUOUSLY AT BACK OF KERBS EXCLUDING THE USE OF CAST-IN-SITU CONCRETE KEREING IN EXISTING DEVELOPED SUBURBS AND TOWNSHIPS.



BARRIER KERB

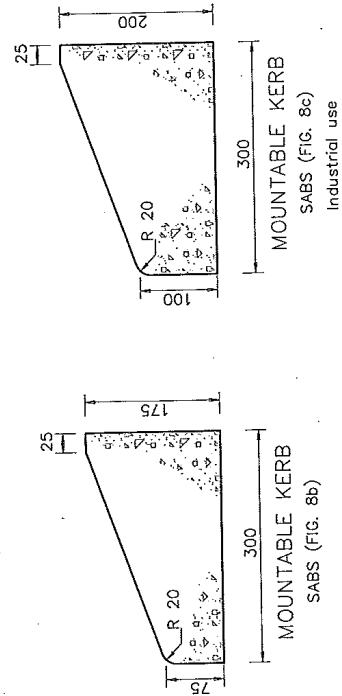
SABS (FIG. 3)

Can also be used as mountable kerbs

SEMI-MOUNTABLE KERB

SABS (FIG. 7)

For use in medians only



MOUNTABLE KERB

SABS (FIG. 8b)

MOUNTABLE KERB

SABS (FIG. 8c)

Industrial use

RECTANGULAR SABS (FIG.10)

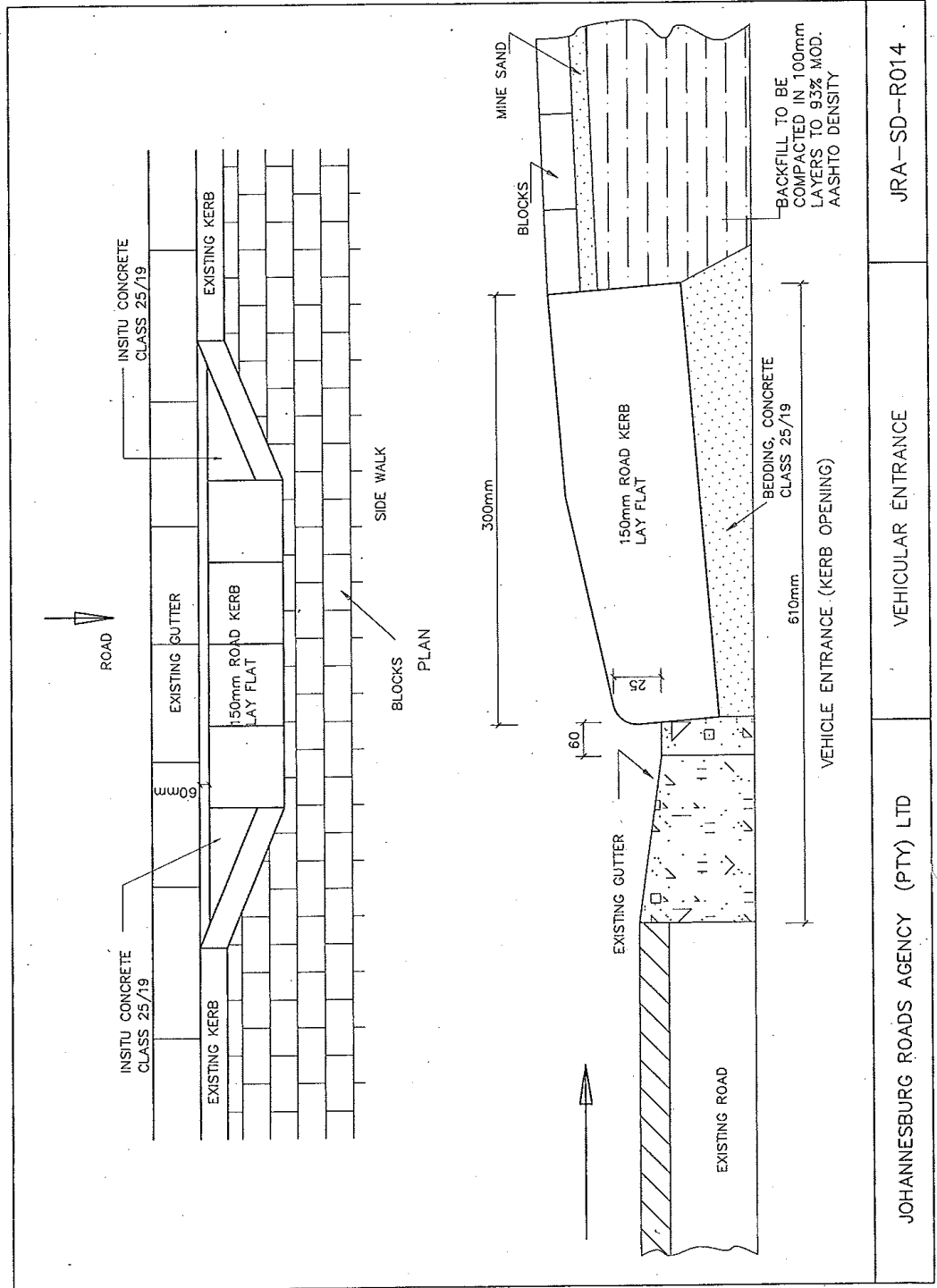
For high side kerbing in low cost developments

RECTANGULAR SABS (FIG.12)

Edge restraints for paving blocks

ANNEXURE B
Particular Project Specifications for Laying of Kerbs

ww



JRA-SD-R014

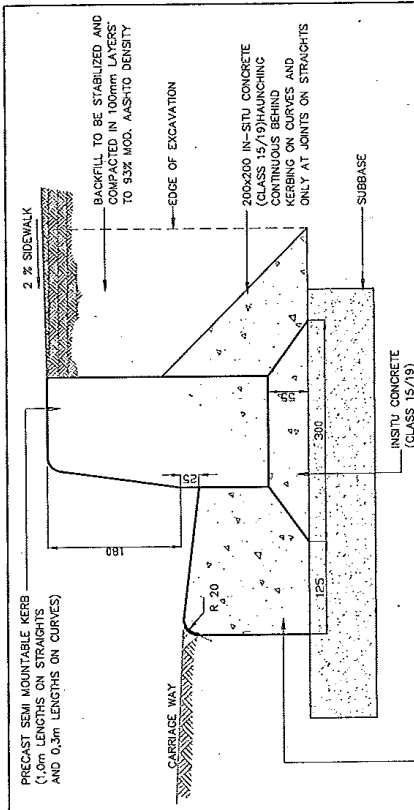
VEHICULAR ENTRANCE

JOHANNESBURG ROADS AGENCY (PTY) LTD

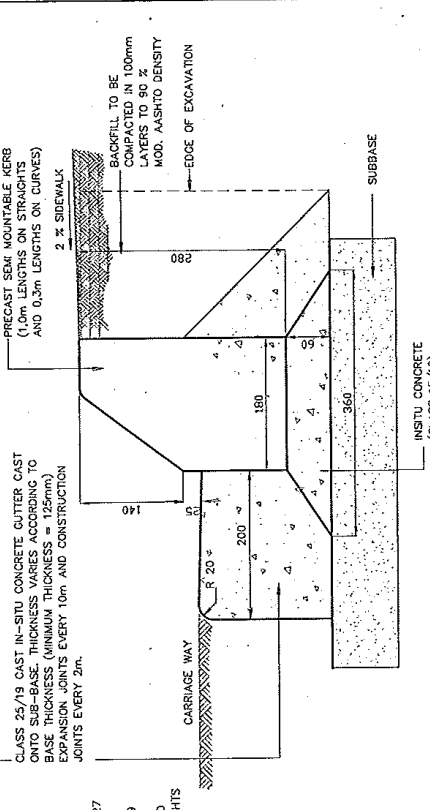
B 3

ANNEXURE B
Particular Project Specifications for Laying of Kerbs

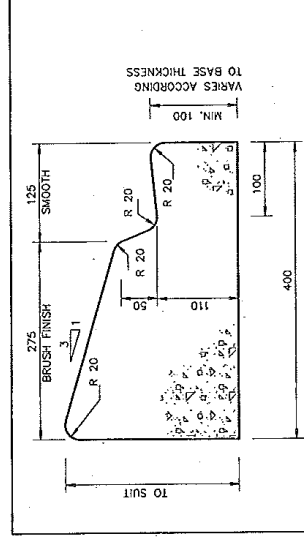
MM



DETAIL OF BARRIER KERB (FIG. 3)



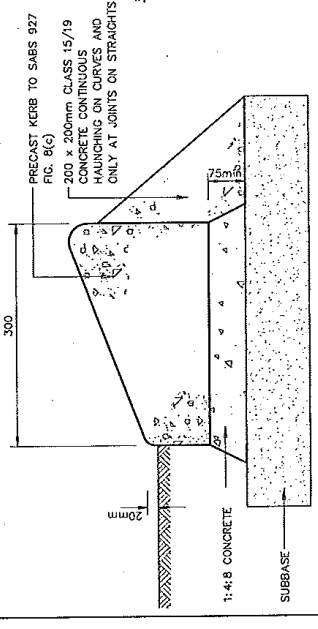
DETAIL OF SEMI-MOUNTABLE KERB (FIG. 7)



CAST IN-SITU MOUNTABLE KERB WITH GUTTER

Only to be used when no alternative exists

- NOTES
1. MINIMUM CONCRETE STRENGTH OF ALL CAST IN-SITU KERBS TO BE CLASS 25/19.
 2. CONCRETE GUTTER TO HAVE A STEEL TROWEL FINISH



PRECAST MOUNTABLE KERB (FIG. 8B OR 8C)

<p>FUNCTIONALITY CRITERIA</p>	<p>FUNCTIONALITY SCORING</p> <p>The below mentioned criteria regarding functionality are required for responsiveness. If the minimum of 12 points is not scored for functionality the proposal will be rejected.</p> <p>A bidder that scores less than 12 points in respect of functionality will be disqualified. If any criterion is rated zero points, the tenderer will be rejected, even if the required 12 out of 20 points are achieved.</p> <table border="1" data-bbox="360 533 1567 1048"> <thead> <tr> <th data-bbox="360 533 443 600">NO.</th> <th data-bbox="443 533 1002 600">DESCRIPTION</th> <th data-bbox="1002 533 1241 600">WEIGHTS</th> <th data-bbox="1241 533 1567 600">MINIMUM SCORE</th> </tr> </thead> <tbody> <tr> <td data-bbox="360 600 443 875">1.</td> <td data-bbox="443 600 1002 875"> <ul style="list-style-type: none"> The service providers experienced and track record of similar or relevant works 1-2 years = 3 points 3 -5 years =5 points 6 years plus = 10points </td> <td data-bbox="1002 600 1241 875">10</td> <td data-bbox="1241 600 1567 875"></td> </tr> <tr> <td data-bbox="360 875 443 981">2.</td> <td data-bbox="443 875 1002 981"> <ul style="list-style-type: none"> Available resources and equipment to execute this project. </td> <td data-bbox="1002 875 1241 981">10</td> <td data-bbox="1241 875 1567 981"></td> </tr> <tr> <td data-bbox="360 981 443 1048"></td> <td data-bbox="443 981 1002 1048" style="text-align: right;">TOTAL</td> <td data-bbox="1002 981 1241 1048">20</td> <td data-bbox="1241 981 1567 1048">12</td> </tr> </tbody> </table>	NO.	DESCRIPTION	WEIGHTS	MINIMUM SCORE	1.	<ul style="list-style-type: none"> The service providers experienced and track record of similar or relevant works 1-2 years = 3 points 3 -5 years =5 points 6 years plus = 10points 	10		2.	<ul style="list-style-type: none"> Available resources and equipment to execute this project. 	10			TOTAL	20	12
NO.	DESCRIPTION	WEIGHTS	MINIMUM SCORE														
1.	<ul style="list-style-type: none"> The service providers experienced and track record of similar or relevant works 1-2 years = 3 points 3 -5 years =5 points 6 years plus = 10points 	10															
2.	<ul style="list-style-type: none"> Available resources and equipment to execute this project. 	10															
	TOTAL	20	12														
<p>EVALUATION OF QUOTATION</p>	<p>FUNCTIONALITY SCORING</p> <p>The below mentioned criteria regarding functionality are required for responsiveness and therefore eligibility for the next stage of evaluation. If the minimum of 12 points is not scored for functionality the quotation will be rejected and not considered for further evaluation. These criteria shall only determine whether a quotation will be eligible for further evaluation and will not influence the points scored on Price.</p> <p>A bidder that scores less than 12 points in respect of functionality will be disqualified. If any criterion is rated zero points, the tenderer will be rejected, even if the required 12 out of 20 points are achieved.</p>																

	NO.	DESCRIPTION	WEIGHTS	MINIMUM SCORE																				
	1.	<ul style="list-style-type: none"> The service providers experienced and track record of similar or relevant works 1-2 years = 3 points 3 -5 years =5 points 6 years plus = 10points 	10																					
	2.	<ul style="list-style-type: none"> Available resources and equipment to execute this project. 	10																					
		TOTAL	20	12																				
<p>All quotations received will be evaluated on the 80/20 point scoring basis. The 80 points will be for Price and 20 points are for Broad Based Black Economic Empowerment (BBBEE) for attaining the BBBEE status level of contribution in accordance with the table below:</p> <table border="1" style="margin-left: auto; margin-right: auto;"> <thead> <tr> <th>BBBEE Status level of contributor</th> <th>Number of points(80/20 system)</th> </tr> </thead> <tbody> <tr><td>1</td><td>20</td></tr> <tr><td>2</td><td>18</td></tr> <tr><td>3</td><td>16</td></tr> <tr><td>4</td><td>12</td></tr> <tr><td>5</td><td>8</td></tr> <tr><td>6</td><td>6</td></tr> <tr><td>7</td><td>4</td></tr> <tr><td>8</td><td>2</td></tr> <tr><td>Non –complaint contributor</td><td>0</td></tr> </tbody> </table>					BBBEE Status level of contributor	Number of points(80/20 system)	1	20	2	18	3	16	4	12	5	8	6	6	7	4	8	2	Non –complaint contributor	0
BBBEE Status level of contributor	Number of points(80/20 system)																							
1	20																							
2	18																							
3	16																							
4	12																							
5	8																							
6	6																							
7	4																							
8	2																							
Non –complaint contributor	0																							
OTHER DOCUMENTS REQUIRED:	<ul style="list-style-type: none"> Original, valid tax clearance certificate Company registration documents Copies of ID's of shareholders Completed MBD 4, MBD 6.1, MBD 8 and MBD 9 Copy of latest municipal account Price schedule (fixed prices including Vat) 																							
CLOSING DATE AND TIME	Wednesday 19 September 2012 at 11.00am																							
COMPULSORY BRIEFING SESSION	Will be held on Friday 14 September 2012 @10:00 at the Flip Uys Boardroom , Civic Centre, Krugersdorp.																							
VALUE OF CONTRACT	The value of this contract will not exceed R200 000.00 for a period of twelve (12) months.																							

SUBMISSION OF QUOTES	Tender box 1 Reception Desk of SCM Unit Upper Level West Wing Civic Centre Krugersdorp
ENQUIRIES:	Johan Britz @ Cell: 082 448 5218

Conditions:

- All prices quoted must be **inclusive of VAT**.
- All prices submitted must be fixed prices for the period of the quotation.
- If the price schedule is not signed the quotation will not be considered.
- No tipp-ex or correction fluid to be used on the quotation documentation- will lead to instant disqualification.
- Quotations completed in pencil will be regarded as invalid.
- All prices quoted must be valid for sixty (60) days.

NAME OF THE BIDDER:

CONTACT PERSON:

TEL/ CELL NO:

FAX NO:

SIGNATURE OF BIDDER

CAPACITY OF BIDDER