



Ref:(SCM)

Enquiries: email: scmenquiries@mogalecity.gov.za

REQUEST FOR FORMAL WRITTEN PRICE QUOTATIONS

**Procurement from R30 000.00 up to a transaction value of R 300 000.00 (including Vat)
(For publication on Mogale City Website and Notice Boards)**

Kindly furnish Mogale City Local Municipality with a written quotation on the goods listed hereunder:

QUOTATION NUMBER	IDS (E) 17/2024
ADVERT DATE	17 MAY 2024
CLOSING DATE AND TIME	24 MAY 2024 @ 11:00
DESCRIPTION OF GOODS / SERVICES	QUOTATIONS ARE HEREBY INVITED FROM SERVICE PROVIDERS FOR THE SUPPLY, DELIVERY AND OFFLOADING OF VARIOUS GALVANIZED TRAFFIC SIGNAL STEEL POLES FOR MCLM.
DEPARTMENT	INFRASTRUCTURE DEVELOPMENT SERVICES – ENERGY SERVICES
ENQUIRIES:	Email: scmenquiries@mogalecity.gov.za

THE QUOTATION MUST BE SUBMITTED ON THE OFFICIAL QUOTATION DOCUMENT (INCLUDING ALL THE REQUIRED ANNEXURES) AND MUST BE DELIVERED BY HAND BEFORE THE OFFICIAL CLOSING DATE AND TIME TO:

**THE SCM UNIT OF MCLM
CIVIC CENTRE
CORNER MARKET & COMMISSIONER STREETS, KRUGERSDORP
UPPER-LEVEL WEST WING
TENDER BOX**

NAME OF BIDDING ENTITY: _____

NAME OF BIDDING ENTITY REPRESENTATIVE: _____

PHYSICAL ADDRESS OF BIDDING ENTITY: _____

POSTAL ADDRESS OF BIDDING ENTITY: _____

CONTACT DETAILS OF BIDDING ENTITY: Tel: _____ Cell: _____

E-MAIL ADDRESS: _____

THE FOLLOWING CONDITIONS WILL APPLY:

A. MANDATORY DOCUMENTS: (IF NOT PROVIDED THE QUOTATION WILL BE INSTANTLY DISQUALIFIED.)

1. The bidding entity must submit Municipal Account which is not more than three (3) months / ninety (90) days plus in arrears at the time of the closing date.
2. The director(s) of the bidding entity / Joint Venture / Consortium must submit Municipal Account which is not more than three (3) months / ninety (90) days plus in arrears at the time of the closing date.
3. The bidding entity must submit a valid signed lease agreement or rental statement which is in the name of the business and or the directors.
4. If the Bidding Entity operates from Informal settlement and is not responsible for municipal account / services:
 - 4.1. The bidder must submit Confirmation on Municipality / Metro letterhead signed and stamped from the ward Councilor / delegate with contact details.
5. If the bidding entity operates from parents' place / director's place or any other place and is not responsible for Municipal account / Services.
 - 5.1. The bidder must submit the property owner's Municipal account and Sworn Affidavit of the property owner with the original stamp from the Commissioner of Oaths.
6. If the bidding entity/ director/s property is new and has not been registered nor has received any Municipal account, a Conveyancer's letter must be submitted as confirmation with the date of transfer.
7. Submit Central Supplier Database (CSD) Registration Report or Summary Report.
8. Completed and Signed Schedule of Pricing as issued in the document.
9. Authority of Signatory must be completed and signed in case of a business not sole proprietor or one-person business or board of director's resolution authorizing signature to sign off the quotation documents.
10. Completed and signed the below Municipal Bidding Documents:
 - 10.1. MBD 1: Invitation to bid (Part A & Part B)
 - 10.2. MBD 4: Declaration of Interest.
 - 10.3. MBD 6.1: Preferential Points
 - 10.4. MBD 6.2: Declaration certificate for local production and content for designated sectors
 - 10.5. MBD 8: Declaration of bidders past supply chain management practices
 - 10.6. MBD 9: Certificate of independent bid determination.

B. QUOTATION CONDITIONS: (NON- COMPLIANCE WITH THE BELOW WILL LEAD TO BIDDER BEING NON-RESPONSIVE).

11. All suppliers of good & services are urged to register in the National Treasury web based Central Suppliers Database with Effect from 1 July 2016 @ www.csd.gov.za.
12. As per National Treasury Instruction No.4 A of 2016/2017 National Treasury Supplier Database, organs of state must ensure that suppliers awarded business with the State are registered on the CSD prior to award letter/purchase order/signed contract being issued.
13. Quotations by joint ventures are to be accompanied by the Document Formation of the joint venture, duly registered and authenticated by a Notary Public or other official deputized to witness sworn statements. This document must define precisely the conditions under which the joint venture will function, the period for which it will function, the persons authorized to represent and obligate it, the address for correspondence, the participation of several firms forming the joint venture and any information necessary to permit a full appraisal of its functioning, including a clause to the effect that the members of the joint venture are jointly and severally bound.
14. No electronic signature will be accepted in the bidding document. The bidder's signature must always be signed by hand in black ink.
15. No late quotations will be accepted.
16. Telefax or e-mail quotations will not be accepted.

17. All quotations must be submitted on the official and original forms and must not be re-typed, copied or scanned. Quotations must only be submitted on the quotation documents as provided by Mogale City Local Municipality.
18. Quotations must be completed in black ink, handwritten and must not be typed.
19. The use of tipp-ex is not allowed on the quotation documents.
20. Quotations completed in pencil will be regarded as invalid quotations.
21. No page(s) must be removed from the original quotation document.
22. Requirements for sealing, addressing, delivery, opening and assessment of quotations are stated in the quotation document.
23. In the event of a mistake having been made on the pricing schedule, it shall be crossed out in ink and be accompanied by initials at each and every alteration. The Municipality reserves the right to reject the bid if corrections are not made in accordance with the above.
24. The lowest or any quotation will not necessarily be accepted, and Mogale City reserves the right to accept a quotation in whole or in part.
25. The Municipality reserves the right to appoint and not to appoint.
26. The validity period for this quotation is sixty (60) days.
27. The Municipality reserve the right to negotiate a fair market related price with recommended bidders after a competitive bidding process or price quotations.
28. All quoted prices must be inclusive of VAT for all registered VAT vendors.
29. All quotation prices must be in RSA currency and inclusive of VAT.
30. In the instance of a term quotation (period longer than one year), please indicate the estimated annual price increase and the intervals of such increases, failure to indicate the escalation will lead to a disqualification.
31. Quotations will be opened immediately after the closing date and time in a venue to be indicated.
32. No quotations will be accepted from persons in the service of state as it is defined in the Municipal Finance Management Act and Regulations.
33. The supply Chain Management Policy of Mogale City Local Municipality allow persons aggrieved by decisions or actions taken by the municipality in the implementation of its supply chain management system, to lodge within fourteen (14) days of the decision or action a written objection or complaint to the municipality against the decision or action.
34. Quotation documents may be downloaded from www.mogalecity.gov.za.

C. ESSENTIAL DOCUMENTS
(THIS WILL NOT RESULT IN A DISQUALIFICATION OF A BIDDER).

35. Tax Clearance Certificate / Tax Compliance Status documents with Pin. Each company within the Joint Venture / Consortium must submit Tax Clearance Certificate or a copy of Tax Compliance Status document with Pin.
36. Copies of director's ID not older than three (3) months, not a copy of a certified copy.
37. Quotations may be submitted electronically on PDF formatted USB.
38. Completed and signed Declaration of Municipal Account.

PLEASE TICK CHECKLIST TO VERIFY WHETHER ALL COMPULSORY DOCUMENTS HAVE BEEN ATTACHED TO YOUR QUOTATION.

No.	Description	YES	NO
1.	The bidding entity must submit Municipal account which is not more than three (3) months / ninety (90) days plus in arrears at the time of the closing date.		
2.	The director(s) of the bidding entity / Joint Venture / consortium must submit Municipal account which is not more than three (3) months / ninety (90) days plus in arrears at the time of the closing date.		
3.	The bidding entity must submit a valid signed lease agreement or rental statement which is in the name of the business and or the directors.		
4.	If the Bidding Entity operates from Informal settlement and is not responsible for municipal account / services		
4.1.	The bidder must submit Confirmation on Municipality / Metro letterhead signed and stamped from the ward Councilor / delegate with contact details.		
5.	If the bidding entity operates from parents' place / director's place or any other place and is not responsible for Municipal account / Services.		
5.1.	The bidder must submit the property owner's Municipal account and Sworn Affidavit of the property owner with the original stamp from the Commissioner of Oaths.		
6.	If the bidding entity/ director/s property is new and has not been registered nor received any Municipal account, a Conveyancer's letter must be submitted as confirmation with the date of transfer.		
7.	Central Supplier Database Report or summary (attached) (from page one to last page in consecutive order)		
8.	Completed and Signed Schedule of Pricing as issued in the document. In the event of a mistake having been made on the pricing schedule, it shall be crossed out in ink and be accompanied by initials at each and every alteration		
9.	Authority of Signatory must be completed and signed in case of a business not sole proprietor or one-person business or board of director's resolution authorizing signature to sign off the quotation documents.		
10.	Completed and signed below Municipal Bidding Documents		
10.1.	MBD 1: Invitation to bid (completed and signed)		
10.2.	MBD 4: Declaration of interest. (Completed and signed)		
10.3.	MBD 6.1: Preference points claim form in terms of the preferential procurement regulations 2022 (completed and signed)		
10.4.	MBD 6.2: Declaration certificate for local production and content for designated sectors		
10.5.	MBD 8: Declaration of bidder's past Supply Chain management practices (Completed and signed)		
10.6.	MBD 9: Certificate of Independent Bid Determination. (Completed and signed)		
11.	Bids may be submitted electronically on PDF formatted USB.		

Signature of person duly authorised to sign a quotation

Date



**MOGALE CITY LOCAL MUNICIPALITY
REQUEST FOR FORMAL WRITTEN PRICE QUOTATION**

Mogale City Local Municipality requests a quotation on the goods/services listed hereunder on the Request for Quotation Forms. Please furnish all the information as requested and return the quotation on the date stipulated. Late and incomplete submissions will invalidate the quotation submitted.

<p>CENTRAL SUPPLIER DATABASE MAAA:</p>	
<p>TAX COMPLIANCE STATUS (TSC) PIN:</p>	
<p>DESCRIPTION OF SERVICE/WORK</p>	<p align="center">PROJECT SPECIFICATIONS</p> <p>Mogale city invites service providers for the supply, delivery and offloading of various galvanized traffic signal steel poles with the following specifications:</p> <p>SABS 044:1983 Welding – the fusion welding of steel SABS 0198: 1988 The selection, handling and installation of electric power cables of rating not exceeding 33kV SABS 657-1:1989 Steel tubes for scaffolding and for structural and general engineering purposes. SABS 1063:1998 Earthing rods, couplers and clamps. SANS 1088:2004 Luminaire entries and spigots. SANS 1418-1:2009 Aerial bundled conductor systems. SANS 182-1:2008 Conductors for overhead electrical transmission lines SABS ISO 1461:2000 Hot-dip (galvanized) zinc coatings. SABS 064 preparation for painting (galvanizing)</p> <p align="center">1. DEFINITIONS AND ABBREVIATIONS</p> <p>The terms, definitions and abbreviations shall apply to this specification.</p> <p align="center">2. REQUIREMENTS</p> <p>2.1 GENERAL</p> <ul style="list-style-type: none"> ▪ All poles shall comply fully with the requirements of SANS 10225 in this specification.

- The poles shall be suitable for use at a mean altitude of 1800m above sea level in an environment subject to heavy pollution at ambient temperatures of -15°C to 65°C.
- The poles will be installed in locations subject to high wind loading (as detailed in clause 5.2 below) and high lightning ground flash density (>10 flashes/km²/year)
- The poles shall be designed, approved and certified by an individual who is professionally registered with the Engineering Council as a structural engineer in accordance with SANS 10225 and manufactured from new materials.

2.2 DESIGN

- The steel tubes used shall comply fully with SABS 657-1
- The poles shall be manufactured of grade 300W steel, with a minimum yield stress of 300Mpa and a minimum tensile strength of 450Mpa, in accordance with SABS 657.
- The poles should be designed to support two luminaries and carry low voltage aerial
- The steel poles, when loaded as detailed above, shall be capable of withstanding fluctuating wind load in accordance with the requirements of the SANS 10225. the terrain category shall be Category 3, and the wind velocity shall be 40ms⁻¹. The force coefficient Cf=1.5.
- The horizontal and vertical deflections shall not exceed any requirements of SANS 10225.
- The design of each pole shall be accompanied by comprehensive strength calculations certified by a qualified professional structural engineer. As this engineer will take full responsibility for the design of the poles, he or she is free to deviate from the drawings supplied for structural reasons.
For instance, the structural engineer may feel that the strength of a particular pole is inadequate, and he or she is therefore at liberty to increase the pole thickness or diameter, etc. These changes must be detailed in the strength calculations supplied.
- The expected life span of all items on this contract will be a minimum of 30 years, all measures and specifications will be taken to attain this life span.
- Approximate mass of each pole : 120kg
- Approximate working load of each pipe : 500kg
- Approximate breaking force for each pole : 200kg

2.3 DESIGN CRITERIA

- One pipe 140 mm o/d x 4, 47 mm thickness x 5220 mm long.
- One pipe 114 mm o/d x 4,47 mm thickness x 2210 mm long, slide – in 140 mm pipe: 305 mm
- One pipe 89 mm o/d x 4,06 mm thickness x 1820 mm long, slide – in 114mm pipe: 203 mm
- The drawings MI – 1 and MI – 2 shows typical dimensions for the poles and tenderers' are requested to submit a proper design for the said item.

2.4 SLEEVES

- Poles must be fitted with a crimp sleeve or a galvanized sleeve. The sleeves must be approximately 7 mm thick and 600 mm long and must be fitted or crimped 1070 mm from the base of the pole, as indicated on drawing MI – 1.

2.5 JOINTS

- Special attention must be paid to joints. All changes in diameter shall be by means of swaging or continuous tapering. Under no circumstances will welded pieces (pipe reducers) inserted into the poles be accepted as indicated on drawing No. P/62 A. All joints shall be beveled prior to welding and shall present a symmetrical appearance

after welding. In addition, all joints shall be designed and manufactured to ensure that there is no ingress of water into the interior of the pole. All welding shall be continuous and in compliance with SABS 044, Parts 1 to 4. All welding shall be dressed where necessary.

2.6 GALVANISING

- After manufacturing is complete, but before galvanizing may commence, pole shall have all weld slag removed by shot- or sand – blasting and a visual inspection shall be carried out to ensure the efficiency of this operation. In addition, the poles shall be internally and externally degreased and all grit, loose rust, welding flux and spatter, rough edges and burns shall be removed.
- All poles shall be hot-dip galvanized in accordance with SABS ISO 1461. the minimum thickness of the zinc layer shall be 90µm. The process used shall comply completely with the requirements of SABS ISO 1461.
- No material may be removed from the pole either mechanically or chemically after galvanizing has been carried out. All items shall be protected against corrosion by either hot-dip galvanizing as detailed above or by manufacture of stainless steel. All possibility of galvanic action shall be avoided.
- Should no such details be submitted, the tender will be deemed to be in full compliance with specification SABS ISO 1461:2000 and a certificate to this effect may be requested before acceptance of the poles. The poles shall be manufactured in such a way that they have an elegant tapered construction or be of a stepped tubular design.

2.7 STATUTORY REQUIREMENTS

- All poles and details offered against this specification should comply in all aspects to the requirements and intentions of the latest edition of the Occupational Health and Safety Act and Regulations of the Republic of South Africa, where applicable.

2.8 QUALITY AND STANDARDS

- All material offered shall be unused material and shall comply with relative specifications of the South African Bureau of Standards in the first instance, where such specifications apply, or with the British Standards Institute, where either of the above standards are listed in this specification.

2.9 INSPECTION AND TESTING

- In addition to the requirements listed below, all poles shall comply with the test requirements of the SABS regulations published.
- Access to the site of manufacture of the poles will at reasonable times be granted to Council officials for inspection purposes. Notwithstanding the fact that the poles are approved it does not indemnify the supplier against any latent defect that may be evident at a later stage.
- The Mogale City Local Municipality may appoint an independent test authority to act on its behalf. This inspection authority shall be allowed free access to any place where work for this contract is carried out, whether on site or at the place of manufacture.
- The tenderer shall carry out tests required by the inspection authority. The tests will be within the ambit of SABS 0198, SANS 10225 and SABS ISO 1461.
- The Mogale City Local Municipality or the appointed authority may also require the welding on 10% of the poles to be radio-graphed and evaluated. The maximum width of any isolated slag inclusion shall not exceed 3mm, and the total length of isolated slag inclusion in any continuous length to weld shall not

exceed 4% of the length of that weld. In addition, no more than four isolated slag inclusions of a maximum width of 3mm in this length shall be permitted.

- In addition to the above, no cracks shall be permitted, and penetration, lack of fusion, undercutting and porosity shall receive attention.
- The cost of the initial testing will be borne by the Mogale City Local Municipality. In the event of any further testing arising out of any item failing a test, the cost of the further testing will be borne by the tenderer.
- In the event of a pole failing the test, the entire consignment of poles shall be radio-graphed at the tenderer's expense. The pole will be individually accepted or rejected on the basis of these radio-graphs
- None of these provisions free the tenderer from any of the inspection and quality control requirements of SABS 0198, SANS 10225 and SABS ISO 1461.

GUARANTEE

All poles shall be guaranteed for a period of 12 months against faulty material and/or faulty workmanship rust etc.

3. TYPES OF TRAFFIC SIGNAL LIGHT POLES

3.1 STANDARD TRAFFIC LIGHT POLES (K 61)

a) CONSTRUCTION

The poles shall be 114 mm diameter by 3.3 m long. When installed the pole top shall be 3.3 m from pavement level as only the foundation frame will be installed below ground level.

A robust foundation frame complete with foundation bolts, nuts and cable duct shall be supplied with each pole.

The base of the pole must be designed to fracture on impact without damaging the foundation or foundation frame to facilitate maintenance. Provision must be made to earth the top of the pole with a 10 mm set screw and nut.

b) MATERIAL

The pole shall be manufactured from first grade steel tubing, adequately rated for the maximum loading due to the fixed mass as well as wind load. No butt or longitudinal welds will be permitted.

c) FINISH

The pole must be thoroughly cleaned and primed with red oxide primer.

d) STANDARD POLE FOUNDATION FRAME

i) CONSTRUCTION

The foundation frame shall consist of four "feet", bent and welded together to form a cage. The top of the cage shall be punched with four, 16 mm bolt holes. The PCD of the four bolt holes shall be the same as that of the mounting holes on the flange of the standard 3,3 m traffic light pole utilised by Mogale City Municipality. The height of the foundation frame shall be no less than 450 mm.

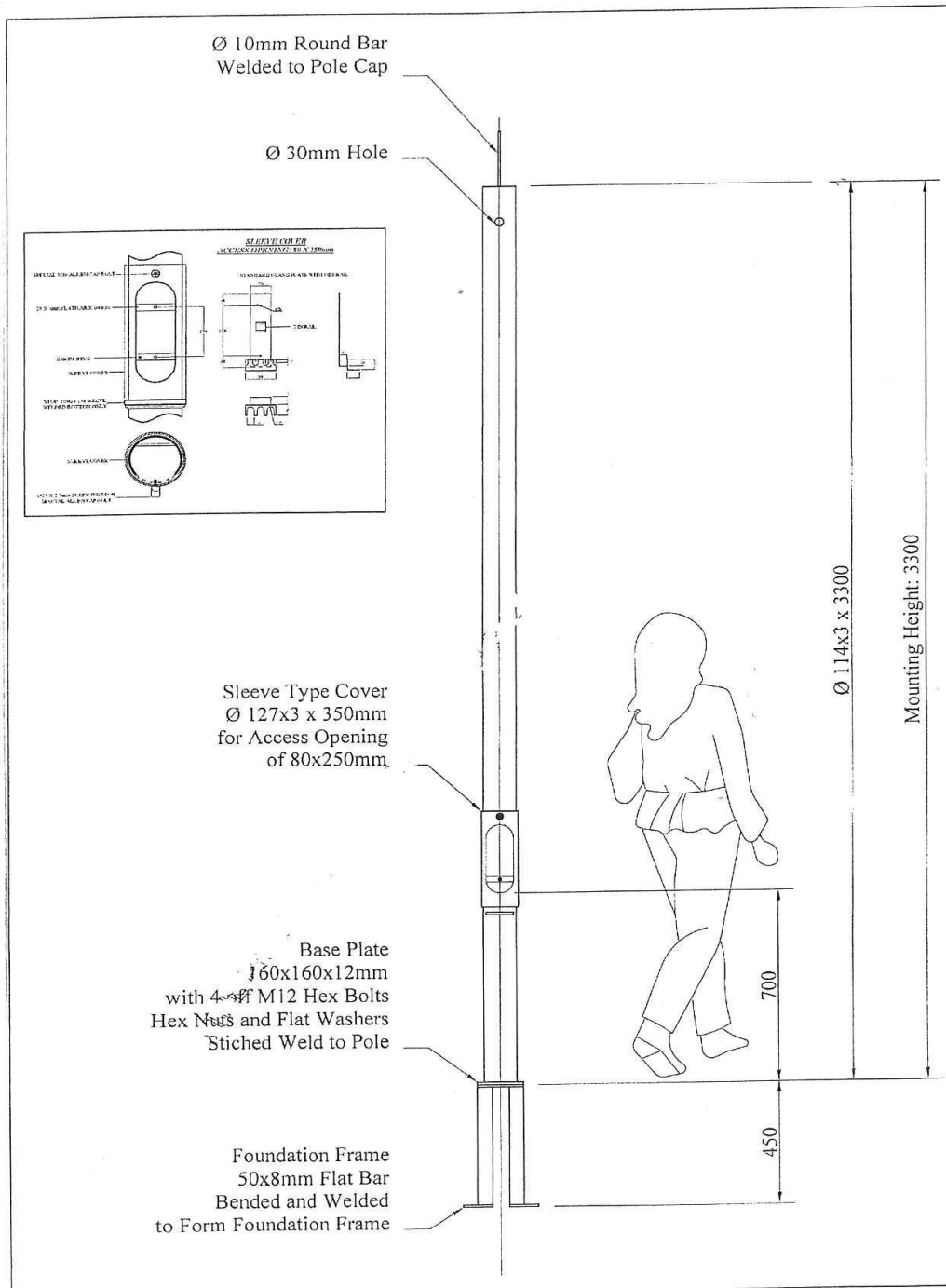
ii) MATERIAL

The foundation frame shall be manufactured from first-grade mild steel. 50 mm x 8 mm flat bar shall be utilised.

iii) **FINISH**

The foundation frame shall be hot-dip galvanised. All welds shall be neat and thoroughly cleaned before galvanising.

ROBOT POLE K 61



Client: Mogale City	Drawn By:	Pole Weight: 50kg	Customers Approval:
Description: 3.3m M/II Traffic Signal Pole with Foundation Frame	Drawn Date: 17-06-2015	Reference No: K 61	Approval Date:
<p>Note:</p> <ol style="list-style-type: none"> 1. All poles swaged down no reducers used 2. Designing of poles to new SANS 10225:2012 3. All tubing to SANS 657-1-2004 Grade S355 4. Fabrication to SANS 10214-1987 5. Galvanizing to SANS 121 (ISO 1461)-1987-1 6. Welding to SANS 10044 Part i, ii, iii, iv 7. Minimum wall thickness at swage 3mm 8. spigot swaged down and not welded in 9. Pole design in accordance with our interpretation of the information provided. It is the clients responsibility to ensure it meets with required specification and design 10. THIS DRAWING AND ILLUSTRATED DESIGN ARE THE PROPERTY OF INDUSTRIAL POLES & MASTS AND MAY NOT BE COPIED OR DISTRIBUTED 			

3.2 TOTEM TRAFFIC LIGHT POLES (K 62)

a) **CONSTRUCTION**

The pole shall be designed to support signals at standard height, as well as supplementary signals at the top of the extended pole. When traffic lights are mounted on the pole the minimum distance between the red signal, mounted at standard height, and the green signal, mounted at extended height, must not be less than 1 m even when four aspect traffic lights are used. When installed the pole shall not be less than 6.2 m from pavement level to the top of the pole. Traffic lights and background screens with a total mass of 100 kg and projected windage area of 2.6 m² will be fixed to the pole. The lower section of the pole shall have an outside diameter of at least 152 mm.

The pole shall be supplied complete with foundation frame, mounting bolts and levelling washers (conventional hook bolts are not acceptable). Fixing bolts for the pole as well as a cable duct must also be supplied.

b) **MATERIAL**

The pole shall be manufactured from first grade steel tubing, adequately rated for the maximum loading due to the fixed mass as well as wind load. No butt or longitudinal welds will be permitted.

c) **FINISH**

All parts, excluding the foundation frame, shall be thoroughly cleaned and primed with red oxide. Fillet welds shall be neat and thoroughly cleaned before priming.

TOTEM POLE FOUNDATION FRAME

i) **CONSTRUCTION**

The foundation frame shall consist of four "feet", bent and welded together to form a cage. The top of the cage shall be punched with four, 25 mm bolt holes. The PCD of the four bolt holes shall be the same as that of the mounting holes on the flange of the 5,1 m cantilever traffic light pole utilised by Mogale City Municipality. The height of the foundation frame shall be no less than 920 mm.

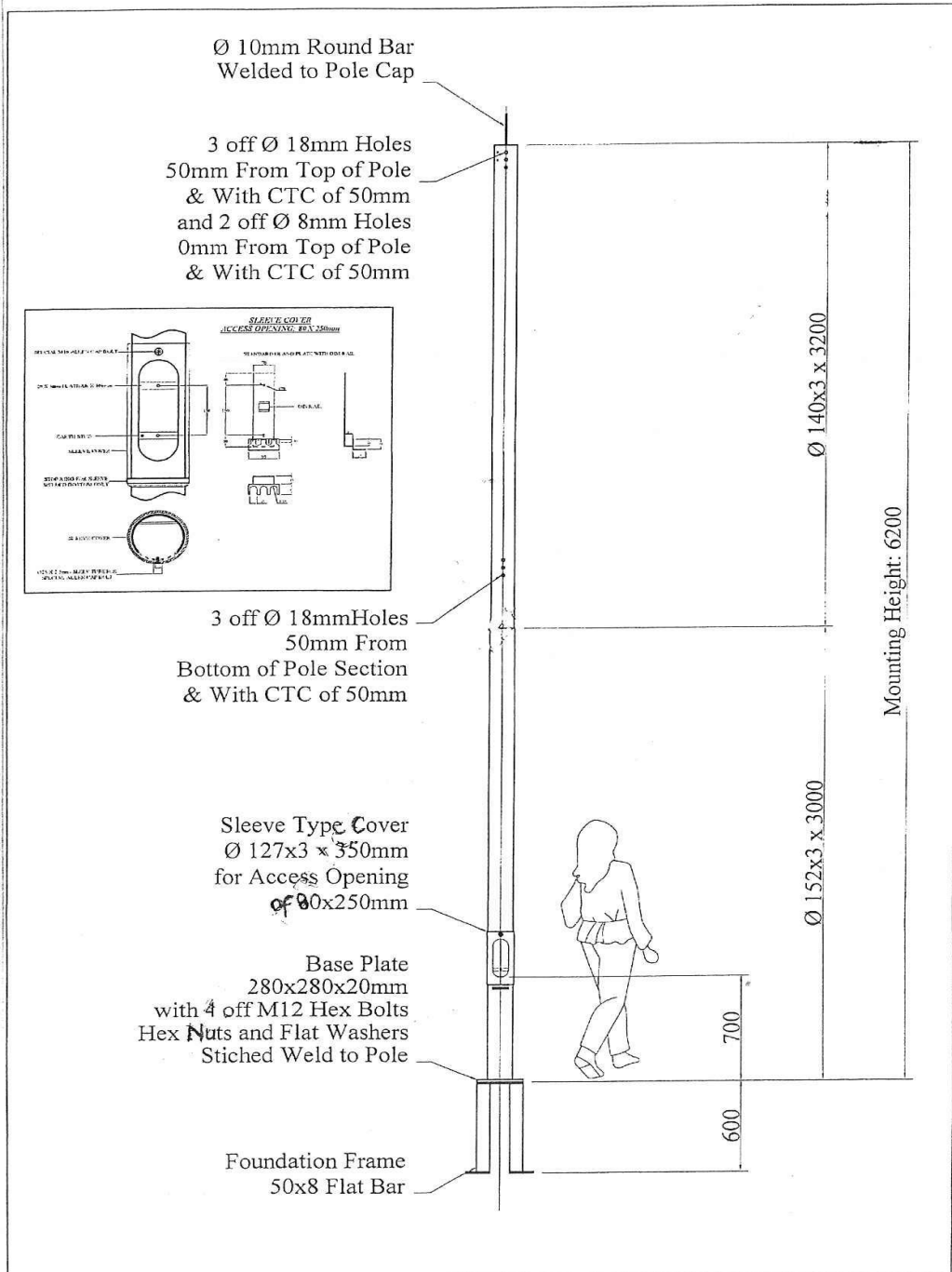
ii) **MATERIAL**

The foundation frame shall be manufactured from first-grade mild steel. 80 mm × 10 mm flat bar shall be utilised.

iii) **FINISH**

The foundation frame shall be hot-dip galvanised. All welds shall be neat and thoroughly cleaned before galvanising.

ROBOT POLE K 62



Client: Mogale City	Drawn By: <i>[Signature]</i>	Pole Weight: 110kg	Customers Approval:
Description: 6.2m M/H Traffic Signal Pole with Foundation Frame	Drawn Date: 17-06-2015	Reference No: K62	Approval Date:
Note: 1. All poles swaged down no reducers used 2. Designing of poles to new SANS 10225:2012 3. All tubing to SANS 657-1-2004 Grade S355 4. Fabrication to SANS 10214-1987 5. Galvanizing to SANS 121 (ISO 1461)-1987-1 6. Welding to SANS 10044 Part i, ii, iii, iv 7. Minimum wall thickness at swage 3mm 8. spigot swaged down and not welded in 9. Pole design in accordance with our interpretation of the information provided. It is the clients responsibility to ensure it meets with required specification and design			

3.3 CANTILEVER TRAFFIC LIGHT POLES (K 65)

i) CONSTRUCTION

The pole shall be designed to support a fixed bracket 6.4 m above road level, overhanging 5 m from the vertical pole. Traffic signal heads and background screens with a total mass of 50 kg and projected windage area of 1.3 m² will be fixed to the bracket. The pole shall be supplied in two sections, each not exceeding 6 m in length, to facilitate transport, storage and installation.

The fixed bracket at the end of the cantilever shall be designed to accommodate any of the following signal configurations complete with background screens:

- 1 × 3 aspect S1, S2, S3 or S4
- 1 × 4 aspect, S5, S6 or S7
- 1 × 5 aspect, S8 or S9
- 2 × 3 aspect side by side, S4/S1R

It shall also be possible to mount the signals back to back on the cantilever.

The minimum clearance of the overhang arm shall not be less than 5.1 m measured at a point 1 m from the centre of the vertical pole. The clearance between the highest point on the road and the lowest point on the overhead signal (normally the bottom of the background screen) must exceed 5.1 m.

The cantilever shall be pivoted at the mast to facilitate installation and maintenance.

The pole shall be supplied complete with a foundation frame, mounting bolts and levelling washers (conventional hook bolts are not acceptable). Fixing bolts for the pole and overhead suspension bracket as well as a cable duct must also be supplied.

ii) MATERIAL

The pole shall be manufactured from first grade steel tubing adequately rated for the maximum loading due to the fixed mass and windage. No butt or longitudinal welds will be permitted.

iii) FINISH

All parts, excluding the foundation frame, shall be thoroughly cleaned and primed with red oxide. Fillet welds shall be neat and thoroughly cleaned before priming.

CANTILEVER POLE FOUNDATION FRAME

i) CONSTRUCTION

The foundation frame shall consist of four "feet", bent and welded together to form a cage. The top of the cage shall be punched with four, 25 mm bolt holes. The PCD of the four bolt holes shall be the same as that of the mounting holes on the flange of the 5,1 m cantilever traffic light pole utilised by Mogale City Municipality. The height of the foundation frame shall be no less than 920 mm.

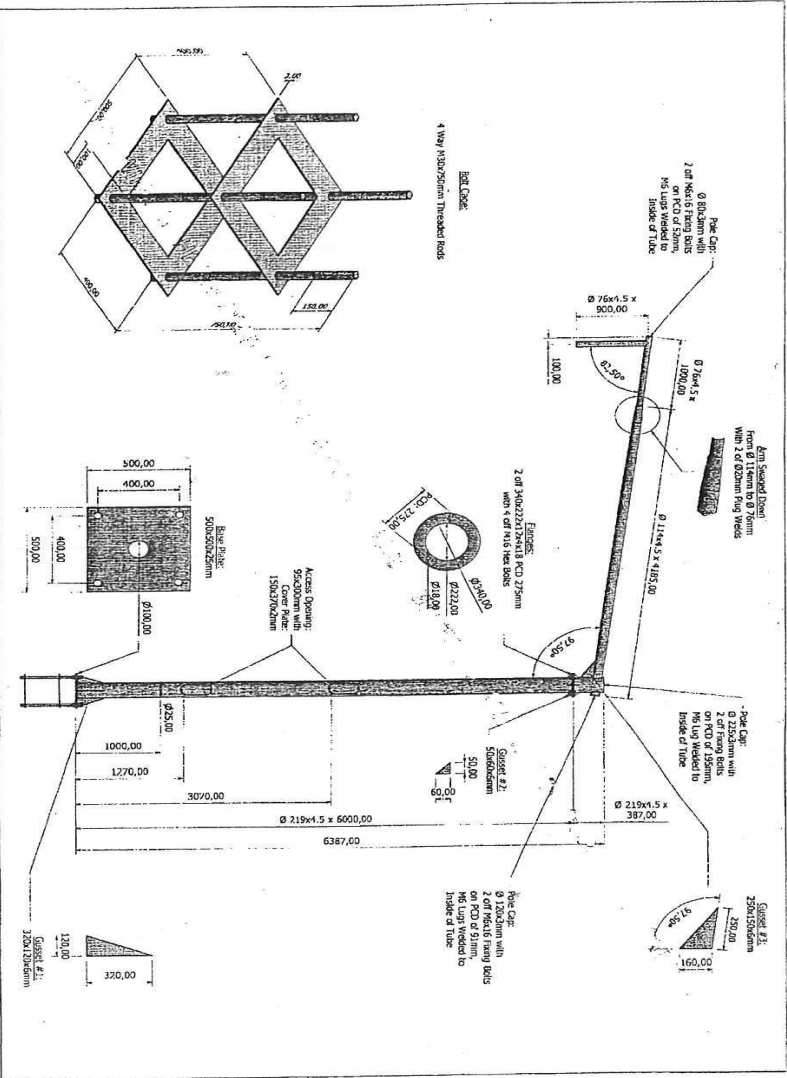
ii) MATERIAL

The foundation frame shall be manufactured from first-grade mild steel. 80 mm × 10 mm flat bar shall be utilised.

iii) FINISH

The foundation frame shall be hot-dip galvanised. All welds shall be neat and thoroughly cleaned before galvanising.

ROBOT POLE K 65



Client:	Mogale City	Drawn By:		Post Mark:	360kg	Customer:	
Description:	6.4m Traffic Signal Pole with 5.2m Cantilever Arm	Drawn Date:	03 March 2015	Project Name:	K65	Approved:	
Notes:	<p>1. A note regarding contract conditions apply.</p> <p>2. Drawing of detail for post, arm, signal, and bracket.</p> <p>3. Material to be used: 275mm x 10mm x 10mm x 10mm.</p> <p>4. Welding to be done in accordance with SANS 10257-2:2001.</p> <p>5. Welding to be done in accordance with SANS 10257-1:2001.</p> <p>6. Welding to be done in accordance with SANS 10257-3:2001.</p> <p>7. All dimensions are in millimeters unless otherwise specified.</p> <p>8. All dimensions are in millimeters unless otherwise specified.</p> <p>9. All dimensions are in millimeters unless otherwise specified.</p> <p>10. All dimensions are in millimeters unless otherwise specified.</p>						

POST TOP POLES - CURVED STREET LIGHT POLES - OUTREACH ARMS - MILD HINGED MASTS - DECORATIVE STREET LIGHT POLES - TRANSMISSION POLES - TRAFFIC SIGNAL POLES - LIGHT STEEL FABRICATION

POINTS FOR SPECIFIC GOALS

All quotations received will be evaluated on the 80/20 point scoring basis. The 80 points will be for Price, 20 points for specific goals to promote transformation and economic development in accordance with the table below:

Preferential Procurement Policy Framework Act.

- 80 points for Price
- 20 Points for specific goals

The specific goals allocated points in terms of this quotation	Number of points allocated (80/20 system) (To be completed by the organ of state)	Number of points claimed (80/20 system) (To be completed by the bidder)
Categories of Historically Disadvantaged Persons. (Black/Indian/Chinese woman/Coloured)	4	
Gender (Woman owned enterprises)	2	
Youth (Enterprise owned by persons younger than 35 years)	2	
Rural based businesses (Enterprise located and operated by persons from rural areas).	2	
Township-based businesses (Enterprise located and operated in Mogale City Local Municipality township).	4	
Disability (Enterprises operated by disabled persons).	2	
Local based Enterprises (within the jurisdiction of Mogale City Local Municipality).	4	



QUOTATIONS ARE HEREBY INVITED FROM SERVICE PROVIDERS FOR THE SUPPLY, DELIVERY AND OFFLOADING OF VARIOUS GALVANIZED TRAFFIC SIGNAL STEEL POLES FOR MCLM.

PRICING SCHEDULE

ITEM NO.	DESCRIPTION	Unit	Unit Rate (EXCL. VAT)	Unit Rate (INCL. VAT)
1.	Standard traffic light poles including foundation frame & mounting bolts/nuts (k 61 as per attached drawing & specification)	ea		
2.	Foundation frame only & mounting bolts/nuts (k61)	ea		
3.	Totem traffic light poles including foundation frame & mounting bolts/nuts (k 62 as per attached drawing & specification)	ea		
4.	Cantilever traffic light poles (k 65 including foundation frame, mounting bolts& nuts as per attached drawing & specification)	ea		
5.	Foundation frame only (k65) & mounting bolts & nuts	ea		

**Note: The quoted price must not exceed Two Hundred Thousand Rand (R200 000.00)
TOTAL AMOUNT FOR EVALUATION PURPOSE ONLY**

NB:

If the bidder/supplier is a VAT Vendor, they must complete the pricing schedule indicating price including VAT

Or

if the bidder/supplier is not registered as a VAT Vendor they must complete the pricing schedule indicating price excluding VAT.

Name of Bidder: Date:

Signature: Position:



**PART A
INVITATION TO BID
MBD 1**

YOU ARE HEREBY INVITED TO BID FOR REQUIREMENTS OF MOGALE CITY LOCAL MUNICIPALITY					
RFQ NUMBER:	IDS (E) 17/2024	CLOSING DATE:	24 MAY 2024	CLOSING TIME:	11:00
DESCRIPTION	QUOTATIONS ARE HEREBY INVITED FROM SERVICE PROVIDERS FOR THE SUPPLY, DELIVERY AND OFFLOADING OF VARIOUS GALVANIZED TRAFFIC SIGNAL STEEL POLES FOR MCLM.				
THE SUCCESSFUL BIDDER WILL BE REQUIRED TO FILL IN AND SIGN A WRITTEN CONTRACT FORM (MBD7).					

BID RESPONSE DOCUMENTS MAY BE DEPOSITED
IN THE BID BOX SITUATED AT (STREET ADDRESS)

CNR. COMMISSIONER & MARKET STREET					
CIVIC CENTRE					
MOGALE CITY					
KRUGERSDORP					
1740					
SUPPLIER INFORMATION					
NAME OF BIDDER					
POSTAL ADDRESS					
STREET ADDRESS					
TELEPHONE NUMBER	CODE		NUMBER		
CELLPHONE NUMBER					
FACSIMILE NUMBER	CODE		NUMBER		
E-MAIL ADDRESS					
VAT REGISTRATION NUMBER					
TAX COMPLIANCE STATUS	TCS PIN:		OR	CSD No:	

B-BBEE STATUS LEVEL VERIFICATION CERTIFICATE [TICK APPLICABLE BOX]	<input type="checkbox"/> Yes <input type="checkbox"/> No	B-BBEE STATUS LEVEL SWORN AFFIDAVIT	<input type="checkbox"/> Yes <input type="checkbox"/> No
[A B-BBEE STATUS LEVEL VERIFICATION CERTIFICATE/ SWORN AFFIDAVIT (FOR EMES & QSEs) MUST BE SUBMITTED IN ORDER TO QUALIFY FOR PREFERENCE POINTS FOR B-BBEE]			
ARE YOU THE ACCREDITED REPRESENTATIVE IN SOUTH AFRICA FOR THE GOODS /SERVICES /WORKS OFFERED?	<input type="checkbox"/> Yes <input type="checkbox"/> No [IF YES ENCLOSE PROOF]	ARE YOU A FOREIGN BASED SUPPLIER FOR THE GOODS /SERVICES /WORKS OFFERED?	<input type="checkbox"/> Yes <input type="checkbox"/> No [IF YES, ANSWER PART B:3]
TOTAL NUMBER OF ITEMS OFFERED		TOTAL BID PRICE	R
SIGNATURE OF BIDDER	DATE	
CAPACITY UNDER WHICH THIS BID IS SIGNED			

PART B
TERMS AND CONDITIONS FOR BIDDING

1. BID SUBMISSION:

- 1.1. BIDS MUST BE DELIVERED BY THE STIPULATED TIME TO THE CORRECT ADDRESS. LATE BIDS WILL NOT BE ACCEPTED FOR CONSIDERATION.
- 1.2. **ALL BIDS MUST BE SUBMITTED ON THE OFFICIAL FORMS PROVIDED– (NOT TO BE RE-TYPED) OR ONLINE**
- 1.3. THIS BID IS SUBJECT TO THE PREFERENTIAL PROCUREMENT POLICY FRAMEWORK ACT AND THE PREFERENTIAL PROCUREMENT REGULATIONS, 2017, THE GENERAL CONDITIONS OF CONTRACT (GCC) AND, IF APPLICABLE, ANY OTHER SPECIAL CONDITIONS OF CONTRACT.

2. TAX COMPLIANCE REQUIREMENTS

- 2.1 BIDDERS MUST ENSURE COMPLIANCE WITH THEIR TAX OBLIGATIONS.
- 2.2 BIDDERS ARE REQUIRED TO SUBMIT THEIR UNIQUE PERSONAL IDENTIFICATION NUMBER (PIN) ISSUED BY SARS TO ENABLE THE ORGAN OF STATE TO VIEW THE TAXPAYER’S PROFILE AND TAX STATUS.
- 2.3 APPLICATION FOR THE TAX COMPLIANCE STATUS (TCS) CERTIFICATE OR PIN MAY ALSO BE MADE VIA E-FILING. IN ORDER TO USE THIS PROVISION, TAXPAYERS WILL NEED TO REGISTER WITH SARS AS E-FILERS THROUGH THE WEBSITE WWW.SARS.GOV.ZA.
- 2.4 FOREIGN SUPPLIERS MUST COMPLETE THE PRE-AWARD QUESTIONNAIRE IN PART B:3.
- 2.5 BIDDERS MAY ALSO SUBMIT A PRINTED TCS CERTIFICATE TOGETHER WITH THE BID.
- 2.6 IN BIDS WHERE CONSORTIA / JOINT VENTURES / SUB-CONTRACTORS ARE INVOLVED, EACH PARTY MUST SUBMIT A SEPARATE TCS CERTIFICATE / PIN / CSD NUMBER.
- 2.7 WHERE NO TCS IS AVAILABLE BUT THE BIDDER IS REGISTERED ON THE CENTRAL SUPPLIER DATABASE (CSD), A CSD NUMBER MUST BE PROVIDED.

3. QUESTIONNAIRE TO BIDDING FOREIGN SUPPLIERS

- 3.1. IS THE ENTITY A RESIDENT OF THE REPUBLIC OF SOUTH AFRICA (RSA)? YES NO
- 3.2. DOES THE ENTITY HAVE A BRANCH IN THE RSA? YES NO
- 3.3. DOES THE ENTITY HAVE A PERMANENT ESTABLISHMENT IN THE RSA? YES NO
- 3.4. DOES THE ENTITY HAVE ANY SOURCE OF INCOME IN THE RSA? YES NO
- 3.5. IS THE ENTITY LIABLE IN THE RSA FOR ANY FORM OF TAXATION? YES NO

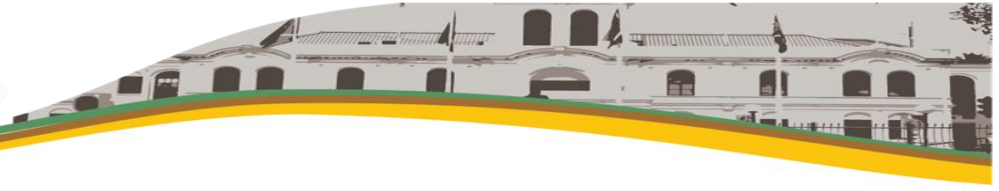
IF THE ANSWER IS “NO” TO ALL OF THE ABOVE, THEN IT IS NOT A REQUIREMENT TO REGISTER FOR A TAX COMPLIANCE STATUS SYSTEM PIN CODE FROM THE SOUTH AFRICAN REVENUE SERVICE (SARS) AND IF NOT REGISTER AS PER 2.3 ABOVE.

**NB: FAILURE TO PROVIDE ANY OF THE ABOVE PARTICULARS MAY RENDER THE BID INVALID.
NO BIDS WILL BE CONSIDERED FROM PERSONS IN THE SERVICE OF THE STATE.**

SIGNATURE OF BIDDER:

CAPACITY UNDER WHICH THIS BID IS SIGNED:

DATE:



DECLARATION OF BIDDER/S MUNICIPAL ACCOUNT(S)

NAME OF BIDDING ENTITY.....

Declaration in terms of paragraph 38(1)(d)(i) of the Supply Chain Management Policy of the MCLM irrespective of the contract value of the bid:

NB: Please not that this declaration must be completed and signed by all bidders

- (i) I, the undersigned hereby declare that the signatory to this tender document; is duly authorised and further declare:
- (ii) That the bidding entity as well as all its directors /shareholders must submit Municipal account which is not more than three (3) months in arrears or valid lease agreement which is in the name of the business and or the directors, which must stipulate who is responsible for payment of municipal services.
- (iii) That the copy of the lease agreement/municipal account in the name of the bidding entity and Lessee will only be accepted if water and lights are part of lease payment.
- (iv) I acknowledge that should it be found that any Municipal Rates and Taxes or Municipal charges as set out in (ii) above are in arrears for more than three (3) months, the bid will be rejected and MCLM may take such remedial action as is required, including the rejection of the bid and/or termination of the contract. (Unless if the bidder has attached proof of the payment arrangement of the arrears to the bid document as at the closing date of the submission of bids)
- (v) The following account/s of the bidding entity has reference:

Municipality	Account number
.....
.....
.....
.....

(NB: if insufficient space above, please submit on a separate page)

(vi) If the Bidding Entity operates from home/ family place / director's place or any other place and is not responsible for Municipal account, the bidder must sign **Declaration of Municipal Account**.

	Yes	No
Bidding entity who operates from informal settlement		
NB: if yes, the Bidding Entity operates from informal settlement and is not responsible for Municipal account/services; <ul style="list-style-type: none"> The bidder must submit confirmation on Municipality/Metro letterhead signed and stamped from the ward councilor/delegate. 		
Bidding entity who operates from a property owned by a director / member / partner		
Bidding entity who operates from somebody else's property (non-Rental paying) N.B: If yes, attach confirmation affidavit of the property owner confirming who is responsible for payment of water and lights.		
Bidding entity who rent premises from a landlord N.B: Attach valid lease agreement which stipulate who is responsible for payment of Municipal services or Rental statement		
Other (Please specify)		

Signed at this day20.....

Name of Duly Authorised Signatory (Please print)

.....

Authorised Signature:

As witness: 1

2

-

(vii) If the Bidding Entity operates from home/ family place and is not responsible for municipal account, the bidder must submit Sworn Affidavit. **(Applicable to Joint Venture / Consortium only)**

	Yes	No
Bidding entity who operates from informal settlement		
NB: if yes, the Bidding Entity operates from informal settlement and is not responsible for Municipal account/services. <ul style="list-style-type: none"> the bidder must submit confirmation on Municipality/Metro letterhead signed and stamped from the ward councilor/delegate. 		
Bidding entity who operates from a property owned by a director / member / partner		
1.		
2.		
Bidding entity who operates from somebody else's property (non-Rental paying) N.B: If yes, attach confirmation affidavit of the property owner confirming who is responsible for payment of water and lights.		
Bidding entity who rent premises from a landlord N.B: Attach lease agreement which stipulate who is responsible for payment of Municipal services.		
Other (Please specify)		

Signed at this day 20.....

Name of Duly Authorised Signatory (Please print)

Authorised Signature:

As witness: 1

2

DECLARATION OF INTEREST

MBD 4

1. No bid will be accepted from persons in the service of the state¹.
2. Any person, having a kinship with persons in the service of the state, including a blood relationship, may make an offer or offers in terms of this invitation to bid. In view of possible allegations of favouritism, should the resulting bid, or part thereof, be awarded to persons connected with or related to persons in service of the state, it is required that the bidder or their authorised representative declare their position in relation to the evaluating/adjudicating authority.
- 3 In order to give effect to the above, the following questionnaire must be completed and submitted with the bid.**

- 3.1 Full Name of bidder or his or her representative:.....
- 3.2 Identity Number:
- 3.3 Position occupied in the Company (director, trustee, hareholder²):.....
- 3.4 Company Registration Number:
- 3.5 Tax Reference Number:.....
- 3.6 VAT Registration Number:
- 3.7 The names of all directors / trustees / shareholders members, their individual identity numbers and state employee numbers must be indicated in paragraph 4 below.
- 3.8 Are you presently in the service of the state? **YES / NO**
- 3.8.1 If yes, furnish particulars.
.....
.....

¹MSCM Regulations: “in the service of the state” means to be –

- (a) a member of –
 - (i) any municipal council;
 - (ii) any provincial legislature; or
 - (iii) the national Assembly or the national Council of provinces;
- (b) a member of the board of directors of any municipal entity;
- (c) an official of any municipality or municipal entity;
- (d) an employee of any national or provincial department, national or provincial public entity or constitutional institution within the meaning of the Public Finance Management Act, 1999 (Act No.1 of 1999);
- (e) a member of the accounting authority of any national or provincial public entity; or

(f) an employee of Parliament or a provincial legislature.

² Shareholder” means a person who owns shares in the company and is actively involved in the management of the company or business and exercises control over the company.

3.9 Have you been in the service of the state for the past twelve months? **YES / NO**

3.9.1 If yes, furnish particulars.....

3.10 Do you have any relationship (family, friend, other) with persons in the service of the state and who may be involved with the evaluation and or adjudication of this bid? **YES / NO**

3.10.1 If yes, furnish particulars.

.....
.....

3.11 Are you, aware of any relationship (family, friend, other) between any other bidder and any persons in the service of the state who may be involved with the evaluation and or adjudication of this bid? **YES / NO**

3.11.1 If yes, furnish particulars

.....
.....

3.12 Are any of the company’s directors, trustees, managers, principle shareholders or stakeholders in service of the state? **YES / NO**

3.12.1 If yes, furnish particulars.

.....
.....

3.13 Are any spouse, child or parent of the company’s directors trustees, managers, principle shareholders or stakeholders in service of the state? **YES / NO**

3.13.1 If yes, furnish particulars.

.....
.....

3.14 Do you or any of the directors, trustees, managers, principle shareholders, or stakeholders of this company have any interest in any other related companies or business whether or not they are bidding for this contract. **YES / NO**

3.14.1 If yes, furnish particulars:

.....
.....

4. Full details of directors / trustees / members / shareholders.

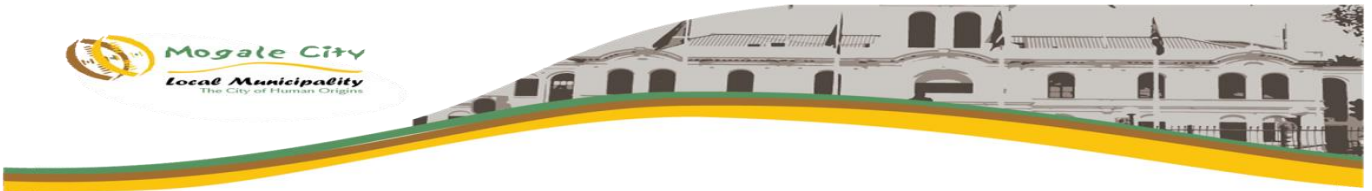
Full Name	Identity Number	State Employee Number

.....
Signature

.....
Date

.....
Capacity

.....
Name of Bidder



MOGALE CITY LOCAL MUNICIPALITY

PREFERENCE POINTS CLAIM FORM IN TERMS OF THE PREFERENTIAL PROCUREMENT REGULATIONS 2022

This preference form must form part of all tenders invited. It contains general information and serves as a claim form for preference points for specific goals.

NB: BEFORE COMPLETING THIS FORM, TENDERERS MUST STUDY THE GENERAL CONDITIONS, DEFINITIONS AND DIRECTIVES APPLICABLE IN RESPECT OF THE TENDER AND PREFERENTIAL PROCUREMENT REGULATIONS, 2022

1. GENERAL CONDITIONS

1.1 The following preference point systems are applicable to invitations to tender:

- the 80/20 system for requirements with a Rand value of up to R50 000 000 (all applicable taxes included); and

1.2 To be completed by the organ of state

The applicable preference point system for this tender is the 80/20 preference point system.

1.3 Points for this tender (even in the case of a tender for income-generating contracts) shall be awarded for:

- (a) Price; and
- (b) Specific Goals.

1.4 To be completed by the organ of state:

The maximum points for this quotation are allocated as follows:

	POINTS
PRICE	80
SPECIFIC GOALS	20
TOTAL POINTS FOR PRICE AND SPECIFIC GOALS	100

1.5 Failure on the part of a tenderer to submit proof or documentation required in terms of this tender to claim points for specific goals with the tender, will be interpreted to mean that preference points for specific goals are not claimed.

1.6 The organ of state reserves the right to require of a tenderer, either before a tender is adjudicated or at any time subsequently, to substantiate any claim in regard to preferences, in any manner required by the organ of state.

2. DEFINITIONS

- (a) **“tender”** means a written offer in the form determined by an organ of state in response to an invitation to provide goods or services through price quotations, competitive tendering process or any other method envisaged in legislation;
- (b) **“price”** means an amount of money tendered for goods or services, and includes all applicable taxes less all unconditional discounts;
- (c) **“rand value”** means the total estimated value of a contract in Rand, calculated at the time of bid invitation, and includes all applicable taxes;
- (d) **“tender for income-generating contracts”** means a written offer in the form determined by an organ of state in response to an invitation for the origination of income-generating contracts through any method envisaged in legislation that will result in a legal agreement between the organ of state and a third party that produces revenue for the organ of state, and includes, but is not limited to, leasing and disposal of assets and concession contracts, excluding direct sales and disposal of assets through public auctions; and
- (e) **“the Act”** means the Preferential Procurement Policy Framework Act, 2000 (Act No. 5 of 2000).

3. FORMULAE FOR PROCUREMENT OF GOODS AND SERVICES

3.1. POINTS AWARDED FOR PRICE

3.1.1 THE 80/20 OR 90/10 PREFERENCE POINT SYSTEMS

A maximum of 80 or 90 points is allocated for price on the following basis:

80/20 or **90/10**

$$Ps = 80 \left(1 - \frac{Pt - P \text{ min}}{P \text{ min}} \right) \text{ or} \quad Ps = 90 \left(1 - \frac{Pt - P \text{ min}}{P \text{ min}} \right)$$

Where

- Ps = Points scored for price of tender under consideration
- Pt = Price of tender under consideration
- Pmin = Price of lowest acceptable tender

3.2. FORMULAE FOR DISPOSAL OR LEASING OF STATE ASSETS AND INCOME GENERATING PROCUREMENT

3.2.1. POINTS AWARDED FOR PRICE

A maximum of 80 or 90 points is allocated for price on the following basis:

80/20 or **90/10**

$$Ps = 80 \left(1 + \frac{Pt - P \text{ max}}{P \text{ max}} \right) \text{ or} \quad Ps = 90 \left(1 + \frac{Pt - P \text{ max}}{P \text{ max}} \right)$$

Where

- Ps = Points scored for price of tender under consideration
- Pt = Price of tender under consideration
- Pmax = Price of highest acceptable tender

4. POINTS AWARDED FOR SPECIFIC GOALS

4.1. In terms of Regulation 4(2); 5(2); 6(2) and 7(2) of the Preferential Procurement Regulations, preference points must be awarded for specific goals stated in the tender. For the purposes of this tender the tenderer will be allocated points based on the goals stated in table 1 below as may be supported by proof/ documentation stated in the conditions of this tender:

4.2. In cases where organs of state intend to use Regulation 3(2) of the Regulations, which states that, if it is unclear whether the 80/20 or 90/10 preference point system applies, an organ of state must, in the tender documents, stipulate in the case of—

(a) an invitation for tender for income-generating contracts, that either the 80/20 or 90/10 preference point system will apply and that the highest acceptable tender will be used to determine the applicable preference point system; or

(b) any other invitation for tender, that either the 80/20 or 90/10 preference point system will apply and that the lowest acceptable tender will be used to determine the applicable preference point system,

then the organ of state must indicate the points allocated for specific goals for both the 90/10 and 80/20 preference point system.

Table 1: Specific goals for the quotation and points claimed are indicated per the table below.

(Note to organs of state: Where either the 90/10 or 80/20 preference point system is applicable, corresponding points must also be indicated as such.

Note to tenderers: The tenderer must indicate how they claim points for each preference point system.)

The specific goals allocated points in terms of this quotations	Number of points allocated (90/10 system) (To be completed by the organ of state)	Number of points allocated (80/20 system) (To be completed by the organ of state)	Number of points claimed (90/10 system) (To be completed by the tenderer)	Number of points claimed (80/20 system) (To be completed by the tenderer)
Categories of Historically Disadvantaged Persons. (Black/Indian/Chinese woman/Coloured)	N/A	4	N/A	
Gender (Woman owned enterprises)	N/A	2	N/A	
Youth enterprise (Enterprise owned by persons younger than 35 years).	N/A	2	N/A	
Rural based businesses (Enterprise located and operated by persons from rural areas).	N/A	2	N/A	
Township-based businesses (Enterprise located and operated in Mogale City Local Municipality townships).	N/A	4	N/A	

Disability (Enterprises operated by disabled persons).	N/A	2	N/A	
Local based Enterprises (within the jurisdiction of Mogale City Local Municipality)	N/A	4	N/A	

DECLARATION WITH REGARD TO COMPANY/FIRM

4.3. Name of company/firm.....

4.4. Company registration number:

4.5. TYPE OF COMPANY/ FIRM

- Partnership/Joint Venture / Consortium
 - One-person business/sole propriety
 - Close corporation
 - Public Company
 - Personal Liability Company
 - (Pty) Limited
 - Non-Profit Company
 - State Owned Company
- [TICK APPLICABLE BOX]

4.6. I, the undersigned, who is duly authorised to do so on behalf of the company/firm, certify that the points claimed, based on the specific goals as advised in the tender, qualifies the company/ firm for the preference(s) shown and I acknowledge that:

- i) The information furnished is true and correct;
- ii) The preference points claimed are in accordance with the General Conditions as indicated in paragraph 1 of this form;
- iii) In the event of a contract being awarded as a result of points claimed as shown in paragraphs 1.4 and 4.2, the contractor may be required to furnish documentary proof to the satisfaction of the organ of state that the claims are correct;
- iv) If the specific goals have been claimed or obtained on a fraudulent basis or any of the conditions of contract have not been fulfilled, the organ of state may, in addition to any other remedy it may have –
 - (a) disqualify the person from the tendering process;
 - (b) recover costs, losses or damages it has incurred or suffered as a result of that person’s conduct;
 - (c) cancel the contract and claim any damages which it has suffered as a result of having to make less favourable arrangements due to such cancellation;
 - (d) recommend that the tenderer or contractor, its shareholders and directors, or only the shareholders and directors who acted on a fraudulent basis, be restricted from obtaining business from any organ of state for a period not exceeding 10 years, after the *audi alteram partem* (hear the other side) rule has been applied; and
 - (e) forward the matter for criminal prosecution, if deemed necessary.

10. **Previous experience**

Provide the following information on relevant previous experience (indicate specifically projects of similar or larger size and/or which is similar with regard to type of work).

Description	Value (R, VAT excluded)	Year(s) executed	Reference		
			Name	Organization	Tel no

10.1 **Staffing Profile**

Provide information on key staff you intend utilizing on this contract, should it be awarded to you.

Name	Position in your organization	Qualifications	Experience

10.2 Infrastructure and resources available to execute this contract

10.2.1 Physical facilities

Description	Address	Area (m ²)

10.3 Plant and equipment

Description : Plant and equipment owned (or to be rented)	Number of units

10.4 List of shareholders by Name, Position, Identity number, Citizenship, HDI status and ownership as relevant.

Name	Date/Position Occupied in Enterprise	ID Number (please attach certified copies of ID's)	Date RSA Citizenship obtained	HDI	Women	Disabl ed	Youth (person not older than 35 years of age)	% of business/ enterprise owned
							Total	100%

8.14 List of shareholders by Name, percentage (%) of business/enterprise owned, residential address.

Full Name	Identity (ID) Number (please attached certified copies of ID's)	% of business/ enterprise owned	Residential address

9. AUTHORITY FOR SIGNATORY

Please note that the sole proprietors or “one-person business” are not required to submit an official and duly signed authority of signatory.

Signatories for close corporations and companies shall confirm their authority by signing on behalf of the company/firm **by attaching to this page** a duly signed and dated copy of the relevant resolution of their members or their board of directors, as the case may be.

An example for a company is shown below:

Printed on company letterhead:

“By resolution of the board of directors passed on _____ 20 _____
Mr _____
has been duly authorized to sign all documents in connection with the bid for
Tender _____ No _____
and any Contract, which may arise there from on behalf of

SIGNED ON BEHALF OF THE COMPANY _____

IN HIS CAPACITY AS _____ CAPACITY AS _____

DATE: _____

SIGNATURE OF SIGNATORY: _____

AS WITNESSES: 1 _____
2 _____

10. I/we, the undersigned, who is / are duly authorised to do so on behalf of the company/firm, certify that the points claimed, based on the B-BBE status level of contribution indicated in paragraph 7 of the foregoing certificate, qualifies the company/ firm for the preference(s) shown and I / we acknowledge that:
- (i) The information furnished is true and correct;
 - (ii) The preference points claimed are in accordance with the General Conditions as indicated in paragraph 1 of this form.
 - (iii) In the event of a contract being awarded as a result of points claimed as shown in paragraph 7, the contractor may be required to furnish documentary proof to the satisfaction of the purchaser that the claims are correct;

- (iv) If the B-BBEE status level of contribution has been claimed or obtained on a fraudulent basis or any of the conditions of contract have not been fulfilled, the purchaser may, in addition to any other remedy it may have –
- (a) disqualify the person from the bidding process;
 - (b) recover costs, losses or damages it has incurred or suffered as a result of that person's conduct;
 - (c) cancel the contract and claim any damages which it has suffered as a result of having to make less favourable arrangements due to such cancellation;
 - (d) restrict the bidder or contractor, its shareholders and directors, or only the shareholders and directors who acted on a fraudulent basis, from obtaining business from any organ of state for a period not exceeding 10 years, after the audi alteram partem (hear the other side) rule has been applied; and
 - (e) forward the matter for criminal prosecution

.....	
SIGNATURE(S) OF TENDERER(S)	
SURNAME AND NAME:
DATE:
ADDRESS:

DECLARATION CERTIFICATE FOR LOCAL PRODUCTION AND CONTENT FOR DESIGNATED SECTORS

This Municipal Bidding Document (MBD) must form part of all bids invited. It contains general information and serves as a declaration form for local content (local production and local content are used interchangeably).

Before completing this declaration, bidders must study the General Conditions, Definitions, Directives applicable in respect of Local Content as prescribed in the Preferential Procurement Regulations, 2011 and the South African Bureau of Standards (SABS) approved technical specification number SATS 1286:2011 (Edition 1) and the Guidance on the Calculation of Local Content together with the Local Content Declaration Templates [Annex C (Local Content Declaration: Summary Schedule), D (Imported Content Declaration: Supporting Schedule to Annex C) and E (Local Content Declaration: Supporting Schedule to Annex C)].

1. General Conditions

- 1.1. Preferential Procurement Regulations, 2011 (Regulation 9) makes provision for the promotion of local production and content.
- 1.2. Regulation 9.(1) prescribes that in the case of designated sectors, where in the award of bids local production and content is of critical importance, such bids must be advertised with the specific bidding condition that only locally produced goods, services or works or locally manufactured goods, with a stipulated minimum threshold for local production and content will be considered.
- 1.3. Where necessary, for bids referred to in paragraph 1.2 above, a two stage bidding process may be followed, where the first stage involves a minimum threshold for local production and content and the second stage price and B-BBEE.
- 1.4. A person awarded a contract in relation to a designated sector, may not sub-contract in such a manner that the local production and content of the overall value of the contract is reduced to below the stipulated minimum threshold.
- 1.5. The local content (LC) expressed as a percentage of the bid price must be calculated in accordance with the SABS approved technical specification number SATS 1286: 2011 as follows:

$$LC = [1 - x / y] * 100$$

Where

x is the imported content in Rand

y is the bid price in Rand excluding value added tax (VAT)

Prices referred to in the determination of x must be converted to Rand (ZAR) by using the exchange rate published by the South African Reserve Bank (SARB) at 12:00 on the date of advertisement of the bid as required in paragraph 4.1 below.

The SABS approved technical specification number SATS 1286:2011 is accessible on http://www.thedti.gov.za/industrial_development/ip.jsp at no cost.

1.6. A bid may be disqualified if –

(a) this Declaration Certificate and the Annex C (Local Content Declaration: Summary Schedule) are not submitted as part of the bid documentation; and

(b) the bidder fails to declare that the Local Content Declaration Templates (Annex C, D and E) have been audited and certified as correct.

2. Definitions

2.1. **“bid”** includes written price quotations, advertised competitive bids or proposals;

2.2. **“bid price”** price offered by the bidder, excluding value added tax (VAT);

2.3. **“contract”** means the agreement that results from the acceptance of a bid by an organ of state;

2.4. **“designated sector”** means a sector, sub-sector or industry that has been designated by the Department of Trade and Industry in line with national development and industrial policies for local production, where only locally produced services, works or goods or locally manufactured goods meet the stipulated minimum threshold for local production and content;

2.5. **“duly sign”** means a Declaration Certificate for Local Content that has been signed by the Chief Financial Officer or other legally responsible person nominated in writing by the Chief Executive, or senior member / person with management responsibility (close corporation, partnership or individual).

2.6. **“imported content”** means that portion of the bid price represented by the cost of components, parts or materials which have been or are still to be imported (whether by the supplier or its subcontractors) and which costs are inclusive of the costs abroad (this includes labour and intellectual property costs), plus freight and other direct importation costs, such as landing costs, dock duties, import duty, sales duty or other similar tax or duty at the South African port of entry;

2.7. **“local content”** means that portion of the bid price which is not included in the imported content, provided that local manufacture does take place;

2.8. **“stipulated minimum threshold”** means that portion of local production and content as determined by the Department of Trade and Industry; and

2.9. **“sub-contract”** means the primary contractor’s assigning, leasing, making out work to, or employing another person to support such primary contractor in the execution of part of a project in terms of the contract.

3. The stipulated minimum threshold(s) for local production and content (refer to Annex A of SATS 1286:2011) for this bid is/are as follows:

<u>Description of services, works or goods</u>	<u>Stipulated minimum threshold</u>
STREET LIGHT STEEL POLES	100%

4. Does any portion of the services, works or goods offered

have any imported content?

(Tick applicable box)

YES	<input type="checkbox"/>	NO	<input type="checkbox"/>
-----	--------------------------	----	--------------------------

- 4.1 If yes, the rate(s) of exchange to be used in this bid to calculate the local content as prescribed in paragraph 1.5 of the general conditions must be the rate(s) published by the SARB for the specific currency at 12:00 on the date of advertisement of the bid.

The relevant rates of exchange information is accessible on www.reservebank.co.za.

Indicate the rate(s) of exchange against the appropriate currency in the table below (refer to Annex A of SATS 1286:2011):

Currency	Rates of exchange
US Dollar	
Pound Sterling	
Euro	
Yen	
Other	

NB: Bidders must submit proof of the SARB rate (s) of exchange used.

5. Were the Local Content Declaration Templates (Annex C, D and E) audited and certified as correct?
(Tick applicable box)

YES	<input type="checkbox"/>	NO	<input type="checkbox"/>
-----	--------------------------	----	--------------------------

- 5.1. If yes, provide the following particulars:

- (a) Full name of auditor:
- (b) Practice number:
- (c) Telephone and cell number:
- (d) Email address:

(Documentary proof regarding the declaration will, when required, be submitted to the satisfaction of the Accounting Officer / Accounting Authority)

6. Where, after the award of a bid, challenges are experienced in meeting the stipulated minimum threshold for local content the dti must be informed accordingly in order for

the dti to verify and in consultation with the Accounting Officer / Accounting Authority provide directives in this regard.

LOCAL CONTENT DECLARATION

(REFER TO ANNEX B OF SATS 1286:2011)

LOCAL CONTENT DECLARATION BY CHIEF FINANCIAL OFFICER OR OTHER LEGALLY RESPONSIBLE PERSON NOMINATED IN WRITING BY THE CHIEF EXECUTIVE OR SENIOR MEMBER/PERSON WITH MANAGEMENT RESPONSIBILITY (CLOSE CORPORATION, PARTNERSHIP OR INDIVIDUAL)

IN RESPECT OF BID NO.

ISSUED BY: (Procurement Authority / Name of Municipality / Municipal Entity):
.....

NB

1 The obligation to complete, duly sign and submit this declaration cannot be transferred to an external authorized representative, auditor or any other third party acting on behalf of the bidder.

2 Guidance on the Calculation of Local Content together with Local Content Declaration Templates (Annex C, D and E) is accessible on <http://www.thedti.gov.za/industrialdevelopment/ip.jsp>. Bidders should first complete Declaration D. After completing Declaration D, bidders should complete Declaration E and then consolidate the information on Declaration C. **Declaration C should be submitted with the bid documentation at the closing date and time of the bid in order to substantiate the declaration made in paragraph (c) below.** Declarations D and E should be kept by the bidders for verification purposes for a period of at least 5 years. The successful bidder is required to continuously update Declarations C, D and E with the actual values for the duration of the contract.

I, the undersigned, (full names),
do hereby declare, in my capacity as
of(name of bidder entity), the following:

- (a) The facts contained herein are within my own personal knowledge.
- (b) I have satisfied myself that
 - (i) the goods/services/works to be delivered in terms of the above-specified bid comply with the minimum local content requirements as specified in the bid, and as measured in terms of SATS 1286:2011; and
 - (ii) the declaration templates have been audited and certified to be correct.

(c) The local content percentages (%) indicated below has been calculated using the formula given in clause 3 of SATS 1286:2011, the rates of exchange indicated in paragraph 4.1 above and the information contained in Declaration D and E which has been consolidated in Declaration C;

Bid price, excluding VAT (y)	R
Imported content (x), as calculated in terms of SATS 1286:2011	R
Stipulated minimum threshold for local content (paragraph 3 above)	
Local content %, as calculated in terms of SATS 1286:2011	

If the bid is for more than one product, the local content percentages for each product contained in Declaration C shall be used instead of the table above. The local content percentages for each product has been calculated using the formula given in clause 3 of SATS 1286:2011, the rates of exchange indicated in paragraph 4.1 above and the information contained in Declaration D and E.

(d) I accept that the Procurement Authority / Municipality /Municipal Entity has the right to request that the local content be verified in terms of the requirements of SATS 1286:2011

(e) I understand that the awarding of the bid is dependent on the accuracy of the information furnished in this application. I also understand that the submission of incorrect data, or data that are not verifiable as described in SATS 1286:2011, may result in the Procurement Authority / Municipal / Municipal Entity imposing any or all of the remedies as provided for in Regulation 13 of the Preferential Procurement Regulations, 2011 promulgated under the Preferential Policy Framework Act (PPPFA), 2000 (Act No. 5 of 2000).

SIGNATURE: _____ **DATE:** _____
WITNESS No. 1 _____ **DATE:** _____
WITNESS No. 2 _____ **DATE:** _____

3. ANNEXURE C

3.1. GUIDELINES FOR COMPLETING ANNEXURE C:

LOCAL CONTENT DECLARATION – SUMMARY SCHEDULE

Note: The paragraph numbers correspond to the numbers in Annexure C.

- C1. Tender Number**
Supply the tender number that is specified on the specific tender documentation.
- C2. Tender description**
Supply the tender description that is specified on the specific tender documentation.
- C3. Designated products**
Supply the details of the products that are designated in terms of this tender (i.e. buses).
- C4. Tender Authority**
Supply the name of the tender authority.
- C5. Tendering Entity name**

Provide the tendering entity name (for example, Unibody Bus Builders (Pty) Ltd).

C6. Tender Exchange Rate

Provide the exchange rate used for this tender, as per Municipal Bidding Document (MBD) 6.2.

C7. Specified local content %

Provide the specified minimum local content requirement for the tender (i.e. 90%), as per Municipal Bidding Document (MDB) 6.2.

C8. Tender item number

Provide the tender item number(s) of the products that have a local content requirement as per the tender specification.

C9. List of items

Provide a list of the item(s) corresponding with the tender item number.

This may be a short description or a brand name.

CALCULATION OF LOCAL CONTENT

C10. Tender price

Provide the unit tender price of each item excluding VAT.

C11. Exempted imported content

Provide the ZAR value of the exempted imported content for each item, if applicable. These value(s) must correspond with the value(s) of column D16 on Annexure D.

C12. Tender value net of exempted imported content

Provide the net tender value of the item, if applicable, by deducting the exempted imported content (C11) from the tender price (C10).

C13. Imported value

Provide the ZAR value of the items' imported content.

C14. Local value

Provide the local value of the item by deducting the Imported value (C13) from the net tender value (C12).

C15. Local content percentage (per item)

Provide the local content percentage of the item(s) by dividing the local value (C14) by the net tender value (C12) as per the local content formula in SATS 1286.

TENDER SUMMARY

C16. Tender quantity

Provide the tender quantity for each item number as per the tender specification.

C17. Total tender value

Provide the total tender value by multiplying the tender quantity (C16) by the tender price (C10).

C18. Total exempted imported content

Provide the total exempted imported content by multiplying the tender quantity (C16) by the exempted imported content (C11). These values must correspond with the values of column D18 on Annexure D.

C19. Total imported content

Provide the total imported content of each item by multiplying the tender quantity (C16) by the imported value (C13).

C20. Total tender value

Total tender value is the sum of the values in column C17.

C21. Total exempted imported content

Total exempted imported content is the sum of the values in column C18. This value must correspond with the value of D19 on Annexure D.

C22. Total tender value net of exempted imported content

The total tender value net of exempt imported content is the total tender value (C20) less the total exempted imported content (C21).

C23. Total imported content

Total imported content is the sum of the values in column C19. This value must correspond with the value of D53 on Annexure D.

C24. Total local content

Total local content is the total tender value net of exempted imported content (C22) less the total imported content (C23). This value must correspond with the value of E13 on Annexure E.

C25. Average local content percentage of tender

The average local content percentage of tender is calculated by dividing total local content (C24) by the total tender value net of exempted imported content (C22).

Annex C

Local Content Declaration - Summary Schedule

<i>(C1)</i>	Tender No.		Note: VAT to be excluded from all calculations		
<i>(C2)</i>	Tender description:				
<i>(C3)</i>	Designated product(s)				
<i>(C4)</i>	Tender Authority:				
<i>(C5)</i>	Tendering Entity name:				
<i>(C6)</i>	Tender Exchange Rate:	Pula <input style="width: 50px;" type="text"/>	EU <input style="width: 50px;" type="text"/>	GBP <input style="width: 50px;" type="text"/>	
<i>(C7)</i>	Specified local content %	100			

Calculation of local content								Tender summary			
Tender item no's	List of items	Tender price - each (excl VAT)	Exempted imported value	Tender value net of exempted imported content	Imported value	Local value	Local content % (per item)	Tender Qty	Total tender value	Total exempted imported content	Total Imported content
<i>(C8)</i>	<i>(C9)</i>	<i>(C10)</i>	<i>(C11)</i>	<i>(C12)</i>	<i>(C13)</i>	<i>(C14)</i>	<i>(C15)</i>	<i>(C16)</i>	<i>(C17)</i>	<i>(C18)</i>	<i>(C19)</i>
								<i>(C20)</i> Total tender value			
<u>Signature of tenderer from Annex B</u>								<i>(C21)</i> Total Exempt imported content			
								<i>(C22)</i> Total Tender value net of exempt imported content			
Date: _____								<i>(C23)</i> Total Imported content			
								<i>(C24)</i> Total local content			
								<i>(C25)</i> Average local content % of tender			

4. ANNEXURE D

4.1. GUIDELINES FOR COMPLETING ANNEXURE D:

“IMPORTED CONTENT DECLARATION – SUPPORTING SCHEDULE TO ANNEXURE C”

Note: The paragraph numbers correspond to the numbers in Annexure D.

D1. Tender number

Supply the tender number that is specified on the specific tender documentation.

D2. Tender description

Supply the tender description that is specified on the specific tender documentation.

D3. Designated products

Supply the details of the products that are designated in terms of this tender (i.e. buses).

D4. Tender authority

Supply the name of the tender authority.

D5. Tendering entity name

Provide the tendering entity name (i.e. Unibody Bus Builders (Pty) Ltd).

D6. Tender exchange rate

Provide the exchange rate used for this tender, as per the Standard Bidding Document (SBD) and Municipal Bidding Document (MBD) 6.2.

TABLE A. EXEMPTED IMPORTED CONTENT

D7. Tender item number

Provide the tender item number(s) of the product(s) that have imported content.

D8. Description of imported content

Provide a list of the exempted imported product(s), if any, as specified in the tender.

D9. Local supplier

Provide the name of the local supplier(s) supplying the imported product(s).

D10. Overseas supplier

Provide the name(s) of the overseas supplier(s) supplying the exempted imported product(s).

D11. Imported value as per commercial invoice

Provide the foreign currency value of the exempted imported product(s) disclosed in the commercial invoice accepted by the South African Revenue Service (SARS).

D12. Tender exchange rate

Provide the exchange rate used for this tender as per the Standard Bidding Document (SBD) and Municipal Bidding Document (MBD) 6.2.

D13. Local value of imports

Convert the value of the exempted imported content as per commercial invoice (D11) into the ZAR value by using the tender exchange rate (D12) disclosed in the tender documentation.

D14. Freight costs to port of entry

Provide the freight costs to the South African Port of the exempted imported item.

D15. All locally incurred landing costs and duties

Provide all landing costs including customs and excise duty for the exempted imported product(s) as stipulated in the SATS 1286:2011.

D16. Total landed costs excl VAT

Provide the total landed costs (excluding VAT) for each item imported by adding the corresponding item values in columns D13, D14 and D15. These values must be transferred to column C11 on Annexure C.

D17. Tender quantity

Provide the tender quantity of the exempted imported products as per the tender specification.

D18. Exempted imported value

Provide the imported value for each of the exempted imported product(s) by multiplying the total landed cost (excl. VAT) (D16) by the tender quantity (D17). The values in column D18 must correspond with the values of column C18 of Annexure C.

D19. Total exempted imported value

The total exempted imported value is the sum of the values in column D18. This total must correspond with the value of C21 on Annexure C.

TABLE B. IMPORTED DIRECTLY BY TENDERER

D20. Tender item numbers

Provide the tender item number(s) of the product(s) that have imported content.

D21. Description of imported content:

Provide a list of the product(s) imported directly by tender as specified in the tender documentation.

D22. Unit of measure

Provide the unit of measure for the product(s) imported directly by the tenderer.

D23. Overseas supplier

Provide the name(s) of the overseas supplier(s) supplying the imported product(s).

D24. Imported value as per commercial Invoice

Provide the foreign currency value of the product(s) imported directly by tenderer disclosed in the commercial invoice accepted by the South African Revenue Service (SARS).

D25. Tender rate of exchange

Provide the exchange rate used for this tender as per the Standard Bidding Document (SBD) and Municipal Bidding Document (MBD) 6.2.

D26. Local value of imports

Convert the value of the product(s) imported directly by the tenderer as per commercial invoice (D24) into the ZAR value by using the tender exchange rate (D25) disclosed in the tender documentation.

D27. Freight costs to port of entry

Provide the freight costs to the South African Port of the product(s) imported directly by the tenderer.

D28. All locally incurred landing costs and duties

Provide all landing costs including customs and excise duty for the product(s) imported directly by the tenderer as stipulated in the SATS 1286:2011.

D29. Total landed costs excl VAT

Provide the total landed costs (excluding VAT) for each item imported directly by the tenderer by adding the corresponding item values in columns D26, D27 and D28.

D30. Tender quantity

Provide the tender quantity of the product(s) imported directly by the tenderer as per the tender specification.

D31. Total imported value

Provide the total imported value for each of the product(s) imported directly by the tenderer by multiplying the total landed cost (excl. VAT) (D29) by the tender quantity (D30).

D32. Total imported value by tenderer

The total value of imports by the tenderer is the sum of the values in column D31.

TABLE C. IMPORTED BY THIRD PARTY AND SUPPLIED TO THE TENDERER**D33. Description of imported content**

Provide a list of the product(s) imported by the third party and supplied to the tenderer as specified in the tender documentation.

D34. Unit of measure

Provide the unit of measure for the product(s) imported by the third party and supplied to tenderer as disclosed in the commercial invoice.

D35. Local supplier

Provide the name of the local supplier(s) supplying the imported product(s).

D36. Overseas supplier

Provide the name(s) of the overseas supplier(s) supplying the imported products.

D37. Imported value as per commercial invoice

Provide the foreign currency value of the product(s) imported by the third party and supplied to the tenderer disclosed in the commercial invoice accepted by SARS.

D38. Tender rate of exchange

Provide the exchange rate used for this tender as per the Standard Bidding Document (SBD) and Municipal Bidding Document (MBD) 6.2.

D39. Local value of imports

Convert the value of the product(s) imported by the third party as per commercial invoice (D37) into the ZAR value by using the tender exchange rate (D38) disclosed in the tender documentation.

D40. Freight costs to port of entry

Provide the freight costs to the South African Port of the product(s) imported by third party and supplied to the tenderer.

D41. All locally incurred landing costs and duties

Provide all landing costs including customs and excise duty for the product(s) imported by third party and supplied to the tenderer as stipulated in the SATS 1286:2011.

D42. Total landed costs excluding VAT

Provide the total landed costs (excluding VAT) for each product imported by third party and supplied to the tenderer by adding the corresponding item values in columns D39, D40 and D41.

D43. Quantity imported

Provide the quantity of each product(s) imported by third party and supplied to the tenderer for the tender.

D44. Total imported value

Provide the total imported value of the product(s) imported by third party and supplied to the tenderer by multiplying the total landed cost (D42) by the quantity imported (D43).

D45. Total imported value by third party

The total imported value from the third party is the sum of the values in column D44.

TABLE D. OTHER FOREIGN CURRENCY PAYMENTS**D46. Type of payment**

Provide the type of foreign currency payment. (i.e. royalty payment for use of patent, annual licence fee, etc).

D47. Local supplier making the payment

Provide the name of the local supplier making the payment.

D48. Overseas beneficiary

Provide the name of the overseas beneficiary.

D49. Foreign currency value paid

Provide the value of the listed payment(s) in their foreign currency.

D50. Tender rate of exchange

Provide the exchange rate used for this tender as per the Standard Bidding Document (SBD) and Municipal Bidding Document (MBD) 6.2.

D51. Local value of payments

Provide the local value of each payment by multiplying the foreign currency value paid (D49) by the tender rate of exchange (D50).

D52. Total of foreign currency payments declared by tenderer and/or third party

The total of foreign currency payments declared by tenderer and/or a third party is the sum of the values in column D51.

D53. Total of imported content and foreign currency payment

The total imported content and foreign currency payment is the sum of the values in column D32, D45 and D52. This value must correspond with the value of C23 on Annexure C

Annex D

Imported Content Declaration - Supporting Schedule to Annex C

(D1)
(D2)
(D3)
(D4)
(D5)
(D6)

Tender No.														
Tender description:														
Designated Products:														
Tender Authority:														
Tendering Entity name:														
Tender Exchange Rate:		Pula		EU	R 9,00		GBP	R 12,00						

Note: VAT to be excluded from all calculations

A. Exempted imported content

Calculation of imported content

Summary

Tender item no's	Description of imported content	Local supplier	Overseas Supplier	Foreign currency value as per Commercial Invoice	Tender Exchange Rate	Local value of imports	Freight costs to port of entry	All locally incurred landing costs & duties	Total landed cost excl VAT	Tender Qty	Exempted imported value
(D7)	(D8)	(D9)	(D10)	(D11)	(D12)	(D13)	(D14)	(D15)	(D16)	(D17)	(D18)

(D19) Total exempt imported value R 0

This total must correspond with Annex C - C 21

B. Imported directly by the Tenderer

Calculation of imported content

Summary

Tender item no's	Description of imported content	Unit of measure	Overseas Supplier	Foreign currency value as per Commercial Invoice	Tender Rate of Exchange	Local value of imports	Freight costs to port of entry	All locally incurred landing costs & duties	Total landed cost excl VAT	Tender Qty	Total imported value
(D20)	(D21)	(D22)	(D23)	(D24)	(D25)	(D26)	(D27)	(D28)	(D29)	(D30)	(D31)

(D32) Total imported value by tenderer R 0

C. Imported by a 3rd party and supplied to the Tenderer

Calculation of imported content

Summary

Description of imported content	Unit of measure	Local supplier	Overseas Supplier	Foreign currency value as per Commercial Invoice	Tender Rate of Exchange	Local value of imports	Freight costs to port of entry	All locally incurred landing costs & duties	Total landed cost excl VAT	Quantity imported	Total imported value
(D33)	(D34)	(D35)	(D36)	(D37)	(D38)	(D39)	(D40)	(D41)	(D42)	(D43)	(D44)

(D45) Total imported value by 3rd party R 0

D. Other foreign currency payments

Calculation of foreign currency payments

Summary of payments

Type of payment	Local supplier making the payment	Overseas beneficiary	Foreign currency value paid	Tender Rate of Exchange	Local value of payments
(D46)	(D47)	(D48)	(D49)	(D50)	(D51)

(D52) Total of foreign currency payments declared by tenderer and/or 3rd party R 0

Signature of tenderer from Annex B

Total of imported content & foreign currency payments - (D32), (D45) & (D52) above R 0

Date:

This total must correspond with Annex C - C 23

5. ANNEXURE E

5.1. GUIDELINES TO COMPLETING ANNEXURE E:

“LOCAL CONTENT DECLARATION- SUPPORTING SCHEDULE TO ANNEXURE C”

The paragraph numbers correspond to the numbers in Annexure E

E1. Tender number

Supply the tender number that is specified on the specific tender documentation.

E2. Tender description

Supply the tender description that is specified on the specific tender documentation.

E3. Designated products

Supply the details of the products that are designated in terms of this tender (for example, buses/canned vegetables).

E4. Tender authority

Supply the name of the tender authority.

E5. Tendering entity name

Provide the tendering entity name (for example, Unibody Bus Builders (Pty) Ltd) Ltd).

LOCAL GOODS, SERVICES AND WORKS

E6. Description of items purchased

Provide a description of the items purchased locally in the space provided.

E7. Local supplier

Provide the name of the local supplier that corresponds to the item listed in column E6.

E8. Value

Provide the total value of the item purchased in column E6.

E9. Total local products (Goods, Services and Works)

Total local products (goods, services and works) is the sum of the values in E8.

E10. Manpower costs:

Provide the total of all the labour costs accruing only to the tenderer (i.e. not the suppliers to tenderer).

E11. Factory overheads:

Provide the total of all the factory overheads including rental, depreciation and amortisation for local and imported capital goods, utility costs and consumables. (Consumables are goods used by individuals and businesses that must be replaced regularly because they wear out or are used up. Consumables can also be defined as the components of an end product that are used up or permanently altered in the process of manufacturing, such as basic chemicals.)

E12. Administration overheads and mark-up:

Provide the total of all the administration overheads, including marketing, insurance, financing, interest and mark-up costs.

E13. Total local content:

The total local content is the sum of the values of E9, E10, E11 and E12. This total must correspond with C24 of Annexure C

Annex E

Local Content Declaration - Supporting Schedule to Annex C

<i>(E1)</i>	Tender No.				Note: VAT to be excluded from all calculations
<i>(E2)</i>	Tender description:				
<i>(E3)</i>	Designated products:				
<i>(E4)</i>	Tender Authority:				
<i>(E5)</i>	Tendering Entity name:				

	Local Products (Goods, Services and Works)	Description of items purchased	Local suppliers	Value		
		<i>(E6)</i>	<i>(E7)</i>	<i>(E8)</i>	% of 13	
		Nylon	Abulani			
		<i>(E9)</i> Total local products (Goods, Services and Works)			R 0	
<i>(E10)</i>	Manpower costs	(Tenderer's manpower cost)			R 0	
<i>(E11)</i>	Factory overheads	(Rental, depreciation & amortisation, utility costs, consumables etc.)			R 0	
<i>(E12)</i>	Administration overheads and mark-up	(Marketing, insurance, financing, interest etc.)			R 10	
				<i>(E13)</i> Total local content	R 0	
				This total must correspond with Annex C - C24		

Signature of tenderer from Annex B

Date:



MBD 8

MOGALE CITY LOCAL MUNICIPALITY

DECLARATION OF BIDDER'S PAST SUPPLY CHAIN MANAGEMENT PRACTICES

- 1 This Municipal Bidding Document must form part of all bids invited.
- 2 It serves as a declaration to be used by municipalities and municipal entities in ensuring that when goods and services are being procured, all reasonable steps are taken to combat the abuse of the supply chain management system.
- 3 The bid of any bidder may be rejected if that bidder, or any of its directors have:
 - a. abused the municipality's / municipal entity's supply chain management system or committed any improper conduct in relation to such system;
 - b. been convicted for fraud or corruption during the past five years;
 - c. willfully neglected, reneged on or failed to comply with any government, municipal or other public sector contract during the past five years; or
 - d. been listed in the Register for Tender Defaulters in terms of section 29 of the Prevention and Combating of Corrupt Activities Act (No 12 of 2004).
- 4 **In order to give effect to the above, the following questionnaire must be completed and submitted with the bid.**

Item	Question	Yes	No
4.1	<p>Is the bidder or any of its directors listed on the National Treasury's Database of Restricted Suppliers as companies or persons prohibited from doing business with the public sector?</p> <p>(Companies or persons who are listed on this Database were informed in writing of this restriction by the Accounting Officer/Authority of the institution that imposed the restriction after the <i>audi alteram partem</i> rule was applied).</p> <p>The Database of Restricted Suppliers now resides on the National Treasury's website(www.treasury.gov.za) and can be accessed by clicking on its link at the bottom of the home page.</p>	<p>Yes</p> <input type="checkbox"/>	<p>No</p> <input type="checkbox"/>
4.1.1	<p>If so, furnish particulars:</p>		

4.2	Is the bidder or any of its directors listed on the Register for Tender Defaulters in terms of section 29 of the Prevention and Combating of Corrupt Activities Act (No 12 of 2004)? The Register for Tender Defaulters can be accessed on the National Treasury's website (www.treasury.gov.za) by clicking on its link at the bottom of the home page.	Yes <input type="checkbox"/>	No <input type="checkbox"/>
4.2.1	If so, furnish particulars:		
4.3	Was the bidder or any of its directors convicted by a court of law (including a court of law outside the Republic of South Africa) for fraud or corruption during the past five years?	Yes <input type="checkbox"/>	No <input type="checkbox"/>
4.3.1	If so, furnish particulars:		
Item	Question	Yes	No
4.4	Does the bidder or any of its directors owe any municipal rates and taxes or municipal charges to the municipality / municipal entity, or to any other municipality / municipal entity, that is in arrears for more than three months?	Yes <input type="checkbox"/>	No <input type="checkbox"/>
4.4.1	If so, furnish particulars:		
4.5	Was any contract between the bidder and the municipality / municipal entity or any other organ of state terminated during the past five years on account of failure to perform on or comply with the contract?	Yes <input type="checkbox"/>	No <input type="checkbox"/>
4.7.1	If so, furnish particulars:		

CERTIFICATION

I, THE UNDERSIGNED (FULL NAME)
CERTIFY THAT THE INFORMATION FURNISHED ON THIS
DECLARATION FORM TRUE AND CORRECT.

I ACCEPT THAT, IN ADDITION TO CANCELLATION OF A CONTRACT, ACTION MAY BE
TAKEN AGAINST ME SHOULD THIS DECLARATION PROVE TO BE FALSE.

.....
Signature

.....
Date

.....
Position

.....
Name of Bidder



CERTIFICATE OF INDEPENDENT BID DETERMINATION

I, the undersigned, in submitting the accompanying bid:

IDS (E) 17/2024: QUOTATIONS ARE HEREBY INVITED FROM SERVICE PROVIDERS FOR THE SUPPLY, DELIVERY AND OFFLOADING OF VARIOUS GALVANIZED TRAFFIC SIGNAL STEEL POLES FOR MCLM.

(Bid Number and Description)

in response to the invitation for the bid made by:

MOGALE CITY LOCAL MUNICIPALITY

(Name of Municipality / Municipal Entity)

do hereby make the following statements that I certify to be true and complete in every respect:

I certify, on behalf

of: _____ that:

(Name of Bidder)

1. I have read and I understand the contents of this Certificate;
2. I understand that the accompanying bid will be disqualified if this Certificate is found not to be true and complete in every respect;
3. I am authorized by the bidder to sign this Certificate, and to submit the accompanying bid, on behalf of the bidder;
4. Each person whose signature appears on the accompanying bid has been authorized by the bidder to determine the terms of, and to sign, the bid, on behalf of the bidder;
5. For the purposes of this Certificate and the accompanying bid, I understand that the word "competitor" shall include any individual or organization, other than the bidder, whether or not affiliated with the bidder, who:
 - (a) has been requested to submit a bid in response to this bid invitation;
 - (b) could potentially submit a bid in response to this bid invitation, based on their qualifications, abilities or experience; and
 - (c) provides the same goods and services as the bidder and/or is in the same line of business as the bidder
6. The bidder has arrived at the accompanying bid independently from, and without consultation, communication, agreement or arrangement with any competitor. However communication between partners in a joint venture or consortium³ will not be construed as collusive bidding.

7. In particular, without limiting the generality of paragraphs 6 above, there has been no consultation, communication, agreement or arrangement with any competitor regarding:
- (a) prices;
 - (b) geographical area where product or service will be rendered (market allocation)
 - (c) methods, factors or formulas used to calculate prices;
 - (d) the intention or decision to submit or not to submit, a bid;
 - (e) the submission of a bid which does not meet the specifications and conditions of the bid; or
 - (f) bidding with the intention not to win the bid.
8. In addition, there have been no consultations, communications, agreements or arrangements with any competitor regarding the quality, quantity, specifications and conditions or delivery particulars of the products or services to which this bid invitation relates.
9. The terms of the accompanying bid have not been, and will not be, disclosed by the bidder, directly or indirectly, to any competitor, prior to the date and time of the official bid opening or of the awarding of the contract.

³ **Joint venture or Consortium means an association of persons for the purpose of combining their expertise, property, capital, efforts, skill and knowledge in an activity for the execution of a contract.**

10. I am aware that, in addition and without prejudice to any other remedy provided to combat any restrictive practices related to bids and contracts, bids that are suspicious will be reported to the Competition Commission for investigation and possible imposition of administrative penalties in terms of section 59 of the Competition Act No 89 of 1998 and or may be reported to the National Prosecuting Authority (NPA) for criminal investigation and or may be restricted from conducting business with the public sector for a period not exceeding ten (10) years in terms of the Prevention and Combating of Corrupt Activities Act No 12 of 2004 or any other applicable legislation.

.....
Signature

.....
Date

.....
Position

.....
Name of Bidder